

Recombinant Human NPM1 Protein, MYC/DDK-tagged, C13 and N15-labeled

Cat. No. NPM1-231H Lot. No. (See product label)

SPECIFICATION

Product Overview

NPM1 MS Standard C13 and N15-labeled recombinant protein (NP_002511) with a C-terminal MYC/DDK tag, was expressed in HEK293 cells.

Species

Human

Source

HEK293

Description

The protein encoded by this gene is involved in several cellular processes, including centrosome duplication, protein chaperoning, and cell proliferation. The encoded phosphoprotein shuttles between the nucleolus, nucleus, and cytoplasm, chaperoning ribosomal proteins and core histones from the nucleus to the cytoplasm. This protein is also known to sequester the tumor suppressor ARF in the nucleolus, protecting it from degradation until it is needed. Mutations in this gene are associated with acute myeloid leukemia. Dozens of pseudogenes of this gene have been identified. [provided by RefSeq, Aug 2017]

Molecular Mass

32.6 kDa

AA Sequence

MEDSMDMDMSPLRPQNYLFGCELKADKDYHFKVDNDENEHQLSLRTVSLGAGAKD
ELHIVEAEAMNYEGSPIKVTLATLKMSVQPTVSLGGFEITPPVVLRLKCGSGPVHISG
QHLVAVEEDAEESEDEEEEDVKLLSISGKRSAPGGGSKVPQKKVKLAADEDDEDDDE
EDDEDEDDDDDFDDEEAEEKAPVKKSIRDTPAKNAQKSNQNGKDSKPSSTPRSKG
QESFKKQEKTPKTPKGPSSVEDIKAKMQASIEKGGSLPKVEAKFINYVKNCFRMTDQ

 Tel: 1-631-559-9269 1-516-512-3133

 Email: info@creative-biomart.com  Fax: 1-631-938-8127

 45-1 Ramsey Road, Shirley, NY 11967, USA

EAIQDLWQWRKSLTRTRPLEQKLISEEDLAANDILDYKDDDDKV

Purity > 80% as determined by SDS-PAGE and Coomassie blue staining

Stability Stable for 3 months from receipt of products under proper storage and handling conditions.

Storage Store at -80 centigrade. Avoid repeated freeze-thaw cycles.

Concentration 50 µg/mL as determined by BCA

Storage Buffer 100 mM glycine, 25 mM Tris-HCl, pH 7.3.

GENE INFORMATION

Gene Name [NPM1 nucleophosmin \(nucleolar phosphoprotein B23, numatrin\) \[Homo sapiens \(human\) \]](#)

Official Symbol [NPM1](#)

Synonyms NPM1; nucleophosmin (nucleolar phosphoprotein B23, numatrin); nucleophosmin; B23; NPM; nucleolar phosphoprotein B23; nucleophosmin/nucleoplasmin family; member 1; numatrin; nucleolar protein NO38; nucleophosmin/nucleoplasmin family, member 1; MGC104254;

Gene ID [4869](#)

mRNA Refseq [NM_002520](#)

Protein Refseq [NP_002511](#)

 Tel: 1-631-559-9269 1-516-512-3133

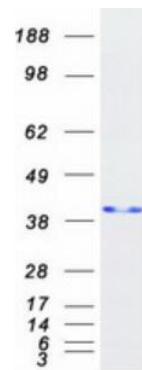
 Email: info@creative-biomart.com  Fax: 1-631-938-8127

 45-1 Ramsey Road, Shirley, NY 11967, USA

MIM 164040

UniProt ID P06748

SDS-PAGE



 Tel: 1-631-559-9269 1-516-512-3133

 Email: info@creative-biomart.com  Fax: 1-631-938-8127

 45-1 Ramsey Road, Shirley, NY 11967, USA