

## Recombinant Human NPM1 Protein, GST-tagged

Cat. No. NPM1-6037H Lot. No. (See product label)

### SPECIFICATION

<b>Product Overview</b>	Human NPM1 full-length ORF ( AAH02398.1, 1 a.a. - 294 a.a.) recombinant protein with GST-tag at N-terminal.
<b>Species</b>	Human
<b>Source</b>	Wheat Germ
<b>Description</b>	NPM1 is a ubiquitously expressed nucleolar protein that shuttles between the nucleus and cytoplasm. It is implicated in multiple functions, including ribosomal protein assembly and transport, control of centrosome duplication, and regulation of the tumor suppressor ARF (MIM 600160). NPM1 mutations that relocalize NPM1 from the nucleus into the cytoplasm are associated with development of acute myeloid leukemia (AML; MIM 601626) (Garzon et al., 2008 [PubMed 18308931]).[supplied by OMIM
<b>Molecular Mass</b>	58.08 kDa
<b>AA Sequence</b>	MEDSMDMDMSPLRPQNYLFGCELKADKDYHFKVDNDENEHQLSLRTVSLGAGAKD ELHIVEAEAMNYEGSPIKVTLATLKMSVQPTVSLGGFEITPPVVLRLKCGSGPVHISG QHLVAVEEDAEESEDEEEEDVKLLSISGKRSAPGGGSKVPQKKVKLAADEDDEDDDDDE EDDDEDDDDDDFDDEEAEKAPVKKSIRDTPAKNAQKSNQNGKDSKPSSTPRSKG QESFKKQEKTPKTPKGPSSVEDIKAKMQASIEKGGSLPKVEAKFINYVKNCFRMTDQ EAIQDLWQWRKSL
<b>Applications</b>	Enzyme-linked Immunoabsorbent Assay

 Tel: 1-631-559-9269 1-516-512-3133

 Email: [info@creative-biomart.com](mailto:info@creative-biomart.com)  Fax: 1-631-938-8127

 45-1 Ramsey Road, Shirley, NY 11967, USA

	Western Blot (Recombinant protein) Antibody Production Protein Array
<b>Notes</b>	Best use within three months from the date of receipt of this protein.
<b>Storage</b>	Store at -80 centigrade. Aliquot to avoid repeated freezing and thawing.
<b>Storage Buffer</b>	50 mM Tris-HCl, 10 mM reduced Glutathione, pH=8.0 in the elution buffer.
<b>GENE INFORMATION</b>	
<b>Gene Name</b>	<a href="#">NPM1 nucleophosmin (nucleolar phosphoprotein B23, numatrin) [ Homo sapiens ]</a>
<b>Official Symbol</b>	<a href="#">NPM1</a>
<b>Synonyms</b>	NPM1; nucleophosmin (nucleolar phosphoprotein B23, numatrin); nucleophosmin; B23; NPM; nucleolar phosphoprotein B23; nucleophosmin/nucleoplasmin family; member 1; numatrin; nucleolar protein NO38; nucleophosmin/nucleoplasmin family, member 1; MGC104254;
<b>Gene ID</b>	<a href="#">4869</a>
<b>mRNA Refseq</b>	<a href="#">NM_001037738</a>
<b>Protein Refseq</b>	<a href="#">NP_001032827</a>
<b>MIM</b>	<a href="#">164040</a>
<b>UniProt ID</b>	<a href="#">P06748</a>

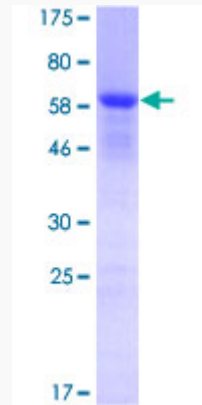
 Tel: 1-631-559-9269 1-516-512-3133

 Email: [info@creative-biomart.com](mailto:info@creative-biomart.com)  Fax: 1-631-938-8127

 45-1 Ramsey Road, Shirley, NY 11967, USA

**Quality Control**

**Testing:**



12.5% SDS-PAGE Stained with Coomassie Blue.

 Tel: 1-631-559-9269 1-516-512-3133

 Email: [info@creative-biomart.com](mailto:info@creative-biomart.com)  Fax: 1-631-938-8127

 45-1 Ramsey Road, Shirley, NY 11967, USA