

Recombinant Human NPM1 protein, His-tagged

Cat. No. NPM1-6322H Lot. No. (See product label)

SPECIFICATION

Product Overview	Recombinant Human NPM1 protein(P06748)(1-294aa), fused with N-terminal His tag, was expressed in E.coli.
Species	Human
Source	E.coli
ProteinLength	1-294aa
Form	If the delivery form is liquid, the default storage buffer is Tris/PBS-based buffer, 5%-50% glycerol. If the delivery form is lyophilized powder, the buffer before lyophilization is Tris/PBS-based buffer, 6% Trehalose, pH 8.0.
Molecular Mass	36.7 kDa
Purity	Greater than 90% as determined by SDS-PAGE.
Storage	Store at -20°C/-80°C upon receipt, aliquoting is necessary for mutiple use. Avoid repeated freeze-thaw cycles.
Reconstitution	We recommend that this vial be briefly centrifuged prior to opening to bring the contents to the bottom. Please reconstitute protein in deionized sterile water to a concentration of 0.1-1.0 mg/mL. We recommend to add 5-50% of glycerol (final concentration) and aliquot for long-term storage at -20°C/-80°C.

 Tel: 1-631-559-9269 1-516-512-3133

 Email: info@creative-biomart.com  Fax: 1-631-938-8127

 45-1 Ramsey Road, Shirley, NY 11967, USA

AA Sequence

MEDSMDMDMSPLRPQNYLFGCELKADKDYHFKVDNDENEHQLSLRRTVSLGAGAKD
 ELHIVEAEAMNYEGSPIKVTLATLKMSVQPTVSLGGFEITPPVVLRLKCGSGPVHISG
 QHLVAVEEDAEESEDEEEEDVKLLSISGKRSAPGGGSKVPQKKVKLAADEDDEDDDDDE
 EDDDEDDDDDDFDDEEAEEKAPVKKSIRDTPAKNAQKSNQNGKDSKPSSTPRSKG
 QESFKKQEKTPKTPKGPSSVEDIKAKMQASIEKGGSLPKVEAKFINYVKNCFRMTDQ
 EAIQDLWQWRKSL

GENE INFORMATION

Gene Name [NPM1 nucleophosmin \(nucleolar phosphoprotein B23, numatrin\) \[Homo sapiens \]](#)

Official Symbol [NPM1](#)

Synonyms NPM1; nucleophosmin (nucleolar phosphoprotein B23, numatrin); nucleophosmin; B23; NPM; nucleolar phosphoprotein B23; nucleophosmin/nucleoplasmin family; member 1; numatrin; nucleolar protein NO38; nucleophosmin/nucleoplasmin family, member 1; MGC104254;

Gene ID [4869](#)

mRNA Refseq [NM_001037738](#)

Protein Refseq [NP_001032827](#)

MIM [164040](#)

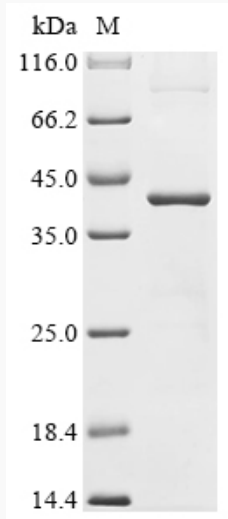
UniProt ID [P06748](#)

 Tel: 1-631-559-9269 1-516-512-3133

 Email: info@creative-biomart.com  Fax: 1-631-938-8127

 45-1 Ramsey Road, Shirley, NY 11967, USA

SDS-PAGE



 Tel: 1-631-559-9269 1-516-512-3133

 Email: info@creative-biomart.com  Fax: 1-631-938-8127

 45-1 Ramsey Road, Shirley, NY 11967, USA