

Recombinant Human NPM1 protein

Cat. No. NPM1-7530H Lot. No. (See product label)

SPECIFICATION

Product Overview	Recombinant Human NPM1protein(P06748-2)(265aa) was expressed in E. coli.
Species	Human
Source	E.coli
ProteinLength	265aa
Tag	Non
Form	20mM Tris.Cl, 50mM NaCl, 50% Glycerol, pH8.0.
Molecular Mass	29.5kDa
Storage	Store at -80°C and avoid repeated freeze-thaw cycles.
Reconstitution	It is recommended that sterile water be added to the vial to prepare a stock solution of 0.2 ug/ul. Centrifuge the vial at 4°C before opening to recover the entire contents.

GENE INFORMATION

Gene Name	NPM1 nucleophosmin (nucleolar phosphoprotein B23, numatrin) [Homo sapiens]
Official Symbol	NPM1

 Tel: 1-631-559-9269 1-516-512-3133

 Email: info@creative-biomart.com  Fax: 1-631-938-8127

 45-1 Ramsey Road, Shirley, NY 11967, USA

Synonyms NPM1; nucleophosmin (nucleolar phosphoprotein B23, numatrin); nucleophosmin; B23; NPM; nucleolar phosphoprotein B23; nucleophosmin/nucleoplasmin family; member 1; numatrin; nucleolar protein NO38; nucleophosmin/nucleoplasmin family, member 1; MGC104254;

Gene ID 4869

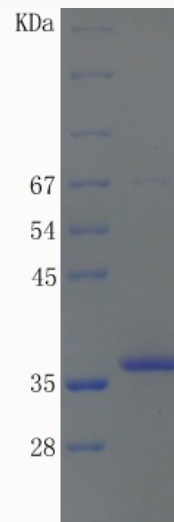
mRNA Refseq NM_001037738

Protein Refseq NP_001032827

MIM 164040

UniProt ID P06748

SDS-PAGE



 Tel: 1-631-559-9269 1-516-512-3133

 Email: info@creative-biomart.com  Fax: 1-631-938-8127

 45-1 Ramsey Road, Shirley, NY 11967, USA