

## Recombinant Human NPM2 Protein, GST-tagged

Cat. No. NPM2-6038H Lot. No. (See product label)

### SPECIFICATION

<b>Product Overview</b>	Human NPM2 full-length ORF ( NP_877724.1, 1 a.a. - 214 a.a.) recombinant protein with GST-tag at N-terminal.
<b>Species</b>	Human
<b>Source</b>	Wheat Germ
<b>Description</b>	NPM2 (Nucleophosmin/Nucleoplasmin 2) is a Protein Coding gene. GO annotations related to this gene include nucleic acid binding and enzyme binding. An important paralog of this gene is NPM1.
<b>Molecular Mass</b>	50.6 kDa
<b>AA Sequence</b>	MNLSSASSTEEKAVTTVLWGCELSQERRTWTFRPQLEGKQSCRLLLHTICLGEKAK EEMHRVEILPPANQEDKKMQPVTIASLQASVLPMSVMGVQLSPPVTFQLRAGSGP VFLSGQERYEASDLTWEEEEEEEEEEEEEEEEDEDEDADISLEEQSPVKQVKRLV PQKQASVAKKKKLEKEEEEIRASVRDKSPVKKAKATARAkkPGFKK
<b>Applications</b>	Enzyme-linked Immunoabsorbent Assay Western Blot (Recombinant protein) Antibody Production Protein Array
<b>Notes</b>	Best use within three months from the date of receipt of this protein.

 Tel: 1-631-559-9269 1-516-512-3133

 Email: [info@creative-biomart.com](mailto:info@creative-biomart.com)  Fax: 1-631-938-8127

 45-1 Ramsey Road, Shirley, NY 11967, USA

**Storage** Store at -80 centigrade. Aliquot to avoid repeated freezing and thawing.

**Storage Buffer** 50 mM Tris-HCl, 10 mM reduced Glutathione, pH=8.0 in the elution buffer.

## GENE INFORMATION

**Gene Name** NPM2 nucleophosmin/nucleoplasmin 2 [ Homo sapiens ]

**Official Symbol** NPM2

**Synonyms** NPM2; nucleophosmin/nucleoplasmin 2; nucleoplasmin-2; MGC78655;

**Gene ID** 10361

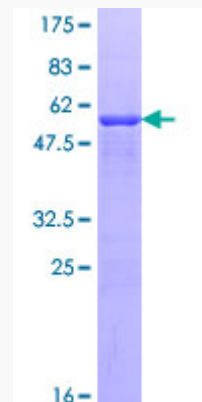
**mRNA Refseq** NM\_182795

**Protein Refseq** NP\_877724

**MIM** 608073

**UniProt ID** Q86SE8

**Quality Control Testing:**



 Tel: 1-631-559-9269 1-516-512-3133

 Email: [info@creative-biomart.com](mailto:info@creative-biomart.com)  Fax: 1-631-938-8127

 45-1 Ramsey Road, Shirley, NY 11967, USA



12.5% SDS-PAGE Stained with Coomassie Blue.

 Tel: 1-631-559-9269 1-516-512-3133

 Email: [info@creative-biomart.com](mailto:info@creative-biomart.com)  Fax: 1-631-938-8127

 45-1 Ramsey Road, Shirley, NY 11967, USA