

# Recombinant Human BNP-32 Protein, N-6xHis and C-mIgG Fc tagged

**Cat. No.** NPPB-13H    **Lot. No.** (See product label)

## SPECIFICATION

<b>Product Overview</b>	Recombinant human BNP-32 with N-6xHis and C- mouse IgG Fc tag was derived from the transfected human HEK293 cells.
<b>Species</b>	Human
<b>Source</b>	HEK293
<b>ProteinLength</b>	Ser103-His134
<b>Description</b>	<p>This gene is a member of the natriuretic peptide family and encodes a secreted protein which functions as a cardiac hormone. The protein undergoes two cleavage events, one within the cell and a second after secretion into the blood. The protein's biological actions include natriuresis, diuresis, vasorelaxation, inhibition of renin and aldosterone secretion, and a key role in cardiovascular homeostasis. A high concentration of this protein in the bloodstream is indicative of heart failure. The presence of myocardial injury is a significant predictor of mortality in hospitalized coronavirus disease 2019 (COVID-19) patients, and there is evidence of increased levels of natriuretic peptide B in hospitalized non-survivor COVID-19 patients. The protein also acts as an antimicrobial peptide with antibacterial and antifungal activity. Mutations in this gene have been associated with postmenopausal osteoporosis.</p>
<b>Form</b>	Lyophilized powder
<b>Molecular Mass</b>	Recombinant human BNP-32 has a calculated molecular mass of 30 kDa (including a

 Tel: 1-631-559-9269    1-516-512-3133

 Email: [info@creative-biomart.com](mailto:info@creative-biomart.com)     Fax: 1-631-938-8127

 45-1 Ramsey Road, Shirley, NY 11967, USA

C-terminal mouse IgG Fc tag, 27 kDa). Due to the abundant glycosylation, it migrates as approximately 37 kDa protein band in SDS-PAGE under DTT, beta-mercaptoethanol reducing conditions.

**Purity**

> 90%, SDS-PAGE under reducing conditions and visualized by Coomassie blue staining

**Storage**

Upon arrival, the protein may be stored for 2 weeks at 4 centigrade. For long term storage, it is recommended to store at -20 centigrade or -80 centigrade in appropriate aliquots. Avoid repeated freeze-thaw cycles.

**Storage Buffer**

Lyophilized from a 0.2 µm filtered solution in PBS.

**Shipping**

Ice packs

**Reconstitution**

Briefly spin the vial and bring the contents to the bottom prior to opening. It is recommended to reconstitute at 0.5-1.0 mg/mL with sterile deionized water or 1xPBS.

## GENE INFORMATION

**Gene Name**

[NPPB natriuretic peptide B \[ Homo sapiens \(human\) \]](#)

**Official Symbol**

[NPPB](#)

**Synonyms**

NPPB; natriuretic peptide B; natriuretic peptide precursor B; natriuretic peptides B; natriuretic protein; brain type natriuretic peptide; gamma-brain natriuretic peptide; BNP;

**Gene ID**

[4879](#)

**mRNA Refseq**

[NM\\_002521](#)

 Tel: 1-631-559-9269 1-516-512-3133

 Email: [info@creative-biomart.com](mailto:info@creative-biomart.com)  Fax: 1-631-938-8127

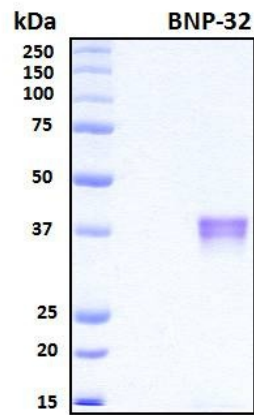
 45-1 Ramsey Road, Shirley, NY 11967, USA

**Protein Refseq** NP\_002512

**MIM** 600295

**UniProt ID** P16860

**SDS-PAGE**



 Tel: 1-631-559-9269 1-516-512-3133

 Email: [info@creative-biomart.com](mailto:info@creative-biomart.com)  Fax: 1-631-938-8127

 45-1 Ramsey Road, Shirley, NY 11967, USA