

Recombinant Human NPPB Protein (His27-Arg102), N-His Flag tagged

Cat. No. NPPB-4732H Lot. No. (See product label)

SPECIFICATION

Product Overview	Recombinant human NPPB (His27-Arg102) fused with the N-terminal His Flag tag was expressed in E. coli.
Species	Human
Source	E.coli
ProteinLength	His27-Arg102
Form	Lyophilized powder/frozen liquid
Molecular Mass	8.36 kDa
Purity	>90% as determined by SDS-PAGE.
Notes	For research use only.
Storage	Use a manual defrost freezer and avoid repeated freeze thaw cycles. Store at 2 to 8 centigrade for one week. Store at -20 to -80 centigrade for twelve months from the date of receipt.
Storage Buffer	Supplied as solution form in PBS or lyophilized from PBS.
Reconstitution	Reconstitute in sterile water for a stock solution.

 Tel: 1-631-559-9269 1-516-512-3133

 Email: info@creative-biomart.com  Fax: 1-631-938-8127

 45-1 Ramsey Road, Shirley, NY 11967, USA



Shipping

They are shipped out with dry ice/blue ice unless customers require otherwise.

GENE INFORMATION

Gene Name

NPPB natriuretic peptide B [Homo sapiens (human)]

Official Symbol

NPPB

Synonyms

NPPB; natriuretic peptide B; natriuretic peptide precursor B; natriuretic peptides B; natriuretic protein; brain type natriuretic peptide; gamma-brain natriuretic peptide; BNP;

Gene ID

4879

mRNA Refseq

NM_002521

Protein Refseq

NP_002512

MIM

600295

UniProt ID

P16860

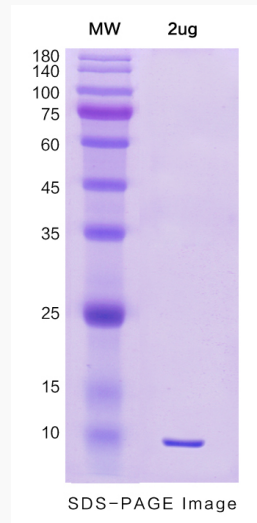
 Tel: 1-631-559-9269 1-516-512-3133

 Email: info@creative-biomart.com  Fax: 1-631-938-8127

 45-1 Ramsey Road, Shirley, NY 11967, USA



SDS-PAGE



Tel: 1-631-559-9269 1-516-512-3133

Email: info@creative-biomart.com Fax: 1-631-938-8127

45-1 Ramsey Road, Shirley, NY 11967, USA