

Recombinant Human NPR1 Protein, Myc/DDK-tagged, C13 and N15-labeled

Cat. No. NPR1-1476H **Lot. No.** (See product label)

SPECIFICATION

Product Overview	NPR1 MS Standard C13 and N15-labeled recombinant protein (NP_000897) with a C-terminal MYC/DDK tag, was expressed in HEK293 cells.
Species	Human
Source	HEK293
Description	<p>Guanylyl cyclases, catalyzing the production of cGMP from GTP, are classified as soluble and membrane forms. The membrane guanylyl cyclases, often termed guanylyl cyclases A through F, form a family of cell-surface receptors with a similar topographic structure: an extracellular ligand-binding domain, a single membrane-spanning domain, and an intracellular region that contains a protein kinase-like domain and a cyclase catalytic domain. GC-A and GC-B function as receptors for natriuretic peptides; they are also referred to as atrial natriuretic peptide receptor A (NPR1) and type B (NPR2). Also see NPR3, which encodes a protein with only the ligand-binding transmembrane and 37-amino acid cytoplasmic domains. NPR1 is a membrane-bound guanylate cyclase that serves as the receptor for both atrial and brain natriuretic peptides (ANP and BNP, respectively).</p>
Molecular Mass	119 kDa
AA Sequence	MPGPRRPAGSRLRLLLLLLLLPLLLLLRGSHAGNLTAVVVLPLANTSYPWSWARVGP AVELALAQVKARPDLLPGWTVRTVLGSSSENALGVCSDTAAPLAAVDLKWEHNPAVF

 Tel: 1-631-559-9269 1-516-512-3133

 Email: info@creative-biomart.com  Fax: 1-631-938-8127

 45-1 Ramsey Road, Shirley, NY 11967, USA

LGPGCVYAAAPVGRFTAHRVPLLTAGAPALGFGVKDEYALTTRAGPSYAKLGDFV
 AALHRRLLGWERQALMLYAYRPGDEEHCFLLVEGLFMRVRDRLNITVDHLEFAEDDL
 SHYTRLLRTMPRKGRVIYICSSPDAFRTLMLLALAEAGLCGEDYVFFHLDIFGQSLQGG
 QGPAPRRPWERGQDVSARQAFQAAKIITYKDPDNPEYLEFLKQLKHLAYEQFNF
 TMEDVLVNTIPASFHDGLLLYIQAVTETLAHGGTVTDGENITQRMWNRSFQGVGTGYL
 KIDSSGDRETDLSLWMDMPENGAFRVVLNNGTSQELVAVSGRKLNWPLGYPPPDI
 PKCGFDNEDPACNQDHLSTLEVLALVGSLSLGILIVSFFIYRKMQLKELASELWRV
 RWEDVEPSSLERHLRSAGSRLTSLGRGSNYGSLLTTEGQFQVFAKTAYYKGNLVAV
 KRVNRKRIELTRKVL FELKHMRDVQNEHLTRFVGACTDPPNICILTEYCPRGSLQDIL
 ENESITLDWMFRYSLTNDIVKGMFLHNGAICSHGNLKSSNCVVDGRFVLKITDYGLE
 SFRDLDP EQGHTVYAKKLWTAPELLRMASPPV RGSQAGDVYSFGIILQEIALRSGVF
 HVEGLDLSPKEI IERVTRGEQPPFRPSLALQSHLEELGLLMQRCWAEDPQERPPFQ
 QIRLTRKFNRENSNILDNLLSRMEQYANNLEELVEERTQAYLEEKRKAEALLYQIL
 PHSVAEQLKRGETVQAEAFDSVTIYFSDIVGFTALSAESTPMQVV TLLNDLYTCF DAV
 IDNFDVYKVETIGDAYMVVSGLPVRNGR LHACEVARMALALLDAVRSFRIRHRPQEQ
 LRLRIGIHTGPVCAGVVGLKMPRYCLFGDVTNTASRMESNGEALKIHLSSSETKAVLE
 EFGGFELELRGDVEMKGGKGVRTYWLLGERGSSTRGTRTRPLEQKLISEEDLAAND
 ILDYKDDDDKV

Purity > 80% as determined by SDS-PAGE and Coomassie blue staining

Stability Stable for 3 months from receipt of products under proper storage and handling conditions.


Storage Store at -80 centigrade. Avoid repeated freeze-thaw cycles.

Concentration 50 µg/mL as determined by BCA

Storage Buffer 100 mM glycine, 25 mM Tris-HCl, pH 7.3.

 Tel: 1-631-559-9269 1-516-512-3133

 Email: info@creative-biomart.com  Fax: 1-631-938-8127

 45-1 Ramsey Road, Shirley, NY 11967, USA

GENE INFORMATION

Gene Name NPR1 natriuretic peptide receptor 1 [Homo sapiens (human)]

Official Symbol NPR1

Synonyms NPR1; natriuretic peptide receptor A/guanylate cyclase A (atrionatriuretic peptide receptor A); ANPRA, NPRA; atrial natriuretic peptide receptor 1; ANPa; GUCY2A; GC-A; ANP-A; NPR-A; ANPR-A; guanylate cyclase A; natriuretic peptide receptor A; atrionatriuretic peptide receptor A; natriuretic peptide A type receptor; atrial natriuretic peptide receptor type A; NPRA; ANPRA; GUC2A;

Gene ID 4881

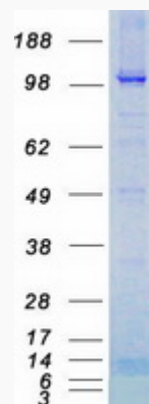
mRNA Refseq NM_000906

Protein Refseq NP_000897

MIM 108960

UniProt ID P16066

SDS-PAGE



 Tel: 1-631-559-9269 1-516-512-3133

 Email: info@creative-biomart.com  Fax: 1-631-938-8127

 45-1 Ramsey Road, Shirley, NY 11967, USA