

## Recombinant Human NPR1 Protein, His-tagged

Cat. No. NPR1-2503H Lot. No. (See product label)

### SPECIFICATION

<b>Product Overview</b>	Recombinant Human NPR1 Protein (Asn34-Glu473) with a N-His tag was expressed in E. coli.
<b>Species</b>	Human
<b>Source</b>	E.coli
<b>ProteinLength</b>	Asn34-Glu473
<b>Description</b>	<p>Guanylyl cyclases, catalyzing the production of cGMP from GTP, are classified as soluble and membrane forms (Garbers and Lowe, 1994 [PubMed 7982997]). The membrane guanylyl cyclases, often termed guanylyl cyclases A through F, form a family of cell-surface receptors with a similar topographic structure: an extracellular ligand-binding domain, a single membrane-spanning domain, and an intracellular region that contains a protein kinase-like domain and a cyclase catalytic domain. GC-A and GC-B function as receptors for natriuretic peptides; they are also referred to as atrial natriuretic peptide receptor A (NPR1) and type B (NPR2; MIM 108961). Also see NPR3 (MIM 108962), which encodes a protein with only the ligand-binding transmembrane and 37-amino acid cytoplasmic domains. NPR1 is a membrane-bound guanylate cyclase that serves as the receptor for both atrial and brain natriuretic peptides (ANP (MIM 108780) and BNP (MIM 600295), respectively).</p>
<b>Form</b>	Freeze-dried powder
<b>Molecular Mass</b>	Predicted Molecular Mass: 52.5 kDa

 Tel: 1-631-559-9269 1-516-512-3133

 Email: [info@creative-biomart.com](mailto:info@creative-biomart.com)  Fax: 1-631-938-8127

 45-1 Ramsey Road, Shirley, NY 11967, USA

	Accurate Molecular Mass: 53 kDa
<b>Endotoxin</b>	<1.0 EU per 1g (determined by the LAL method).
<b>Purity</b>	> 97%
<b>Applications</b>	Positive Control; Immunogen; SDS-PAGE; WB.
<b>Stability</b>	The thermal stability is described by the loss rate. The loss rate was determined by accelerated thermal degradation test, that is, incubate the protein at 37 centigrade for 48h, and no obvious degradation and precipitation were observed. The loss rate is less than 5% within the expiration date under appropriate storage condition.
<b>Storage</b>	Avoid repeated freeze/thaw cycles. Store at 2-8 centigrade for one month. Aliquot and store at -80 centigrade for 12 months.
<b>Storage Buffer</b>	20mM Tris, 150mM NaCl, pH8.0, containing 1mM EDTA, 1mM DTT, 0.01% SKL, 5% Trehalose and Proclin300.
<b>Reconstitution</b>	Reconstitute in 20mM Tris, 150mM NaCl (pH8.0) to a concentration of 0.1-1.0 mg/mL. Do not vortex.

## GENE INFORMATION

<b>Gene Name</b>	NPR1 natriuretic peptide receptor A/guanylate cyclase A (atrionatriuretic peptide receptor A) [ Homo sapiens (human) ]
<b>Official Symbol</b>	NPR1
<b>Synonyms</b>	NPR1; natriuretic peptide receptor A/guanylate cyclase A (atrionatriuretic peptide receptor A); ANPRA, NPRA; atrial natriuretic peptide receptor 1; ANPa; GUCY2A;

 Tel: 1-631-559-9269 1-516-512-3133

 Email: [info@creative-biomart.com](mailto:info@creative-biomart.com)  Fax: 1-631-938-8127

 45-1 Ramsey Road, Shirley, NY 11967, USA

GC-A; ANP-A; NPR-A; ANPR-A; guanylate cyclase A; natriuretic peptide receptor A; atrionatriuretic peptide receptor A; natriuretic peptide A type receptor; atrial natriuretic peptide receptor type A; NPRA; ANPRA; GUC2A;

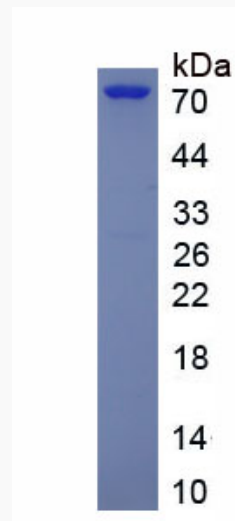
**Gene ID** 4881

**mRNA Refseq** NM\_000906

**Protein Refseq** NP\_000897

**MIM** 108960

**UniProt ID** P16066



 Tel: 1-631-559-9269 1-516-512-3133

 Email: [info@creative-biomart.com](mailto:info@creative-biomart.com)  Fax: 1-631-938-8127

 45-1 Ramsey Road, Shirley, NY 11967, USA