

Recombinant Full Length Human NPR1 Protein, C-Flag-tagged

Cat. No. NPR1-357HFL Lot. No. (See product label)

SPECIFICATION

Product Overview	Recombinant Full Length Human NPR1 Protein, fused to Flag-tag at C-terminus, was expressed in Mammalian cells.
Species	Human
Source	Mammalian Cells
Description	<p>Guanylyl cyclases, catalyzing the production of cGMP from GTP, are classified as soluble and membrane forms. The membrane guanylyl cyclases, often termed guanylyl cyclases A through F, form a family of cell-surface receptors with a similar topographic structure: an extracellular ligand-binding domain, a single membrane-spanning domain, and an intracellular region that contains a protein kinase-like domain and a cyclase catalytic domain. GC-A and GC-B function as receptors for natriuretic peptides; they are also referred to as atrial natriuretic peptide receptor A (NPR1) and type B. Also see NPR3, which encodes a protein with only the ligand-binding transmembrane and 37-amino acid cytoplasmic domains. NPR1 is a membrane-bound guanylate cyclase that serves as the receptor for both atrial and brain natriuretic peptides and BNP, respectively.</p>
Form	25 mM Tris HCl, pH 7.3, 100 mM glycine, 10% glycerol.
Molecular Mass	118.7 kDa
AA Sequence	MPGPRRPAGSRLRLLLLLLLLPLLLLLRGSHAGNLTAVVVLPLANTSYPWSWARVGP AVELALAQVKARP DLLPGWTVRTVLGSSENALGVCSDTAAPLAAVDLKWEHNPAVF

 Tel: 1-631-559-9269 1-516-512-3133

 Email: info@creative-biomart.com  Fax: 1-631-938-8127

 45-1 Ramsey Road, Shirley, NY 11967, USA

LGPGCVYAAAPVGRFTAHRVPLLTAG APALGFGVKDEYALTTRAGPSYAKLGDF
 VAALHRRRLGWERQALMLYAYRPGDEEHCFFLVEGLFMRVRDR LNITVDHLEFAED
 DLSHYTRLLRTMPRKGRVIYICSSPDAFRTLMLLALEAGLCGEDYVFFHLDIFGQSL Q
 GGQGPAPRRPWERGDDGQDVSARQAFQAAKIITYKDPDNPEYLEFLKQLKHLAYEQF
 NFTMEDVLVNTIP ASFHDGLLLYIQAVTETLAHGTVTDGENITQRMWNRSFQGV
 GYLKIDSSGDRETDLSLWMDPENGAF RVVLNYNGTSQELVAVSGRKLNWPLGYP
 PPDIPKCGFDNEDPACNQDHLSTLEVLALVGSLSLLGILIVS FFIYRKMQLKELASEL
 WRVRWEDVEPSSLERHLRSAGSRLTSLGRGSNYGSLLTTEGQFQVFAKTAYYK GN
 LVAVKRVNRKRIELTRKVL FELKHM RDVQNEHLTRFVGACTDPPNICILTEYCPRGSL
 QDILENESIT LDWMFRYSLTNDIVKGMFLFHNGAICSHGNL KSSNCVVDGRFVLKITD
 YGLESFRDLDP EQGHTVYAKKL WTAPELLR MASPPVRGSQAGDVYSFGIILQEIALR
 SGVFHVEGLDLSPK EIIERVTRGEQPPFRPSLALQ SHLEELGLLMQRCWAEDPQER
 PPFQQIRLTLRKF NRENSNILDNLLSRMEQYANNLEELVEERTQAYLE EKRKAEAL
 LYQILPHSVAEQLKRGETVQAEAFDSVTIYFSDIVGFTALSAESTPMQVVTLLNDLYT
 CFDA VIDNFDVYKVETIGDAYMVVSGLPVRNGLHACEVARMALALLDAVRSFRIRH
 RPQEQLRLRIGIHTGPV CAGVVGLKMPRYCLFGDTVNTASRMESNGEALKIHLSS
 TKAVLEEFGGFELELRGDVEMKGGKGVRTYW
 LLGERGSSTRGTRTRPLEQKLISEEDLAANDILDYKDDDDKV

Purity	> 80% as determined by SDS-PAGE and Coomassie blue staining.
Stability	Stable for 12 months from the date of receipt of the product under proper storage and handling conditions. Avoid repeated freeze-thaw cycles.
Storage	Store at -80 centigrade.
Concentration	>50 ug/mL as determined by microplate BCA method.
Preparation	Recombinant protein was captured through anti-DDK affinity column followed by conventional chromatography steps.

 Tel: 1-631-559-9269 1-516-512-3133

 Email: info@creative-biomart.com
 Fax: 1-631-938-8127

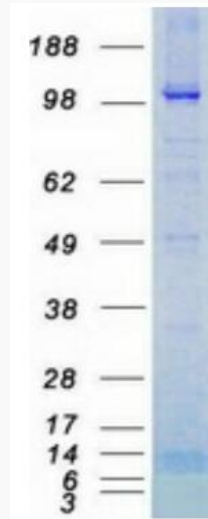
 45-1 Ramsey Road, Shirley, NY 11967, USA

Protein Families	Druggable Genome, Protein Kinase
Protein Pathways	Purine metabolism, Vascular smooth muscle contraction
Full Length	Full L.
GENE INFORMATION	
Gene Name	NPR1 natriuretic peptide receptor 1 [Homo sapiens (human)]
Official Symbol	NPR1
Synonyms	ANPa; NPRA; ANPRA; GUC2A; GUCY2A
Gene ID	4881
mRNA Refseq	NM_000906.4
Protein Refseq	NP_000897.3
MIM	108960
UniProt ID	P16066

 Tel: 1-631-559-9269 1-516-512-3133

 Email: info@creative-biomart.com  Fax: 1-631-938-8127

 45-1 Ramsey Road, Shirley, NY 11967, USA



Coomassie blue staining of purified NPR1 protein.

 Tel: 1-631-559-9269 1-516-512-3133

 Email: info@creative-biomart.com  Fax: 1-631-938-8127

 45-1 Ramsey Road, Shirley, NY 11967, USA