

Recombinant Human NPR1 Protein, GST-tagged

Cat. No. NPR1-6043H Lot. No. (See product label)

SPECIFICATION

Product Overview	Human NPR1 partial ORF (AAH63304, 147 a.a. - 247 a.a.) recombinant protein with GST-tag at N-terminal.
Species	Human
Source	Wheat Germ
Description	<p>Guanylyl cyclases, catalyzing the production of cGMP from GTP, are classified as soluble and membrane forms (Garbers and Lowe, 1994 [PubMed 7982997]). The membrane guanylyl cyclases, often termed guanylyl cyclases A through F, form a family of cell-surface receptors with a similar topographic structure: an extracellular ligand-binding domain, a single membrane-spanning domain, and an intracellular region that contains a protein kinase-like domain and a cyclase catalytic domain. GC-A and GC-B function as receptors for natriuretic peptides; they are also referred to as atrial natriuretic peptide receptor A (NPR1) and type B (NPR2; MIM 108961). Also see NPR3 (MIM 108962), which encodes a protein with only the ligand-binding transmembrane and 37-amino acid cytoplasmic domains. NPR1 is a membrane-bound guanylate cyclase that serves as the receptor for both atrial and brain natriuretic peptides (ANP (MIM 108780) and BNP (MIM 600295), respectively).[supplied by OMIM</p>
Molecular Mass	36.74 kDa
AA Sequence	GVKDEYALTTRAGPSYAKLGDFVAALHRRLLGWERQALMLYAYRPGDEEHCFLLVE

 Tel: 1-631-559-9269 1-516-512-3133

 Email: info@creative-biomart.com  Fax: 1-631-938-8127

 45-1 Ramsey Road, Shirley, NY 11967, USA

GLFMRVRDRLNITVDHLEFAEDDLSHYTRLLRTPRKGRVIYICSS

Applications

Enzyme-linked Immunoabsorbent Assay
 Western Blot (Recombinant protein)
 Antibody Production
 Protein Array

Notes

Best use within three months from the date of receipt of this protein.

Storage

Store at -80 centigrade. Aliquot to avoid repeated freezing and thawing.

Storage Buffer

50 mM Tris-HCl, 10 mM reduced Glutathione, pH=8.0 in the elution buffer.

GENE INFORMATION

Gene Name

[NPR1 natriuretic peptide receptor A/guanylate cyclase A \(atrinatriuretic peptide receptor A\) \[Homo sapiens \]](#)

Official Symbol

[NPR1](#)

Synonyms

NPR1; natriuretic peptide receptor A/guanylate cyclase A (atrinatriuretic peptide receptor A); ANPRA, NPRA; atrial natriuretic peptide receptor 1; ANPa; GUCY2A; GC-A; ANP-A; NPR-A; ANPR-A; guanylate cyclase A; natriuretic peptide receptor A; atrinatriuretic peptide receptor A; natriuretic peptide A type receptor; atrial natriuretic peptide receptor type A; NPRA; ANPRA; GUC2A;

Gene ID

[4881](#)

mRNA Refseq

[NM_000906](#)

Protein Refseq

[NP_000897](#)

 Tel: 1-631-559-9269 1-516-512-3133

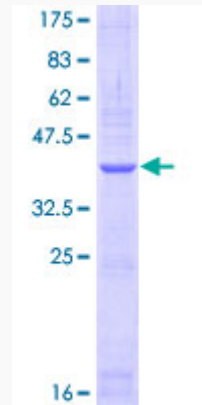
 Email: info@creative-biomart.com  Fax: 1-631-938-8127

 45-1 Ramsey Road, Shirley, NY 11967, USA

MIM 108960

UniProt ID P16066

**Quality Control
Testing:**



12.5% SDS-PAGE Stained with Coomassie Blue.

 Tel: 1-631-559-9269 1-516-512-3133

 Email: info@creative-biomart.com  Fax: 1-631-938-8127

 45-1 Ramsey Road, Shirley, NY 11967, USA