

## Recombinant Human KMT2A Protein, His-tagged

Cat. No. NPR2-571H Lot. No. (See product label)

### SPECIFICATION

<b>Product Overview</b>	Recombinant Human KMT2A Protein(P20594)(23-458 aa), fused with C-terminal His tag, was expressed in Mammalian cell.
<b>Species</b>	Human
<b>Source</b>	Mammalian cells
<b>ProteinLength</b>	23-458 aa
<b>Form</b>	Lyophilized from a 0.2 µm filtered PBS, 6% Trehalose, pH 7.4.
<b>Molecular Mass</b>	50.0kDa
<b>AASequence</b>	RNLT LAVVLPEHNLSYAWAWPRVGP AVALAVEALGRALPVDLRFVSSELEGACSEY LAPLSAVDLKLYHDPDLLLGP GCVYPAASVARFASHWRLPLLTAGAVASGFSKND HYRTLVRTGPSAPKLGEFVVTLHG HFNWTARAALLYLDARTDDRPHYFTIEGVFEAL QGSNLSVQH QVYAREPGGPEQATHFIRANGRIVYICGPLEMLHEILLQAQRENLTNG DYVFFYL DVFGE SLRAGPTRATGRP WQDNRTREQA QALREAFQTVLVITYREPPNP EYQEFQNRLLIRAREDFGVELG PSLMNL IAGCFYD GILLYAEVLNETIQEGGTREDGL RIVEKMQGRRYHGVTGLVVM DKNNDRETDFVLWAMGDL DSGDFQPAAHYSGAEK QIWWTGRPIPVWVKGAPPSDNPPCAF DLDLDDPSCDKTPLSTLAI
<b>Purity</b>	Greater than 95% as determined by SDS-PAGE.
<b>Storage</b>	Store at -20°C/-80°C upon receipt, aliquoting is necessary for mutiple use. Avoid

Tel: 1-631-559-9269 1-516-512-3133

Email: [info@creative-biomart.com](mailto:info@creative-biomart.com) Fax: 1-631-938-8127

45-1 Ramsey Road, Shirley, NY 11967, USA

repeated freeze-thaw cycles.

**Reconstitution**

We recommend that this vial be briefly centrifuged prior to opening to bring the contents to the bottom. Please reconstitute protein in deionized sterile water to a concentration of 0.1-1.0 mg/mL. We recommend to add 5-50% of glycerol (final concentration) and aliquot for long-term storage at -20°C/-80°C.

**protein Refseq-Weblink**

[http://www.ncbi.nlm.nih.gov/protein/NP\\_003986.2](http://www.ncbi.nlm.nih.gov/protein/NP_003986.2)

**Unit ID**

P20594

**Unit ID-Weblink**

<https://www.uniprot.org/uniprot/P20594>

## GENE INFORMATION

**Gene Name**

[NPR2 natriuretic peptide receptor B/guanylate cyclase B \(atrio-natriuretic peptide receptor B\) \[ Homo sapiens \]](#)

**Official Symbol**

[NPR2](#)

**Synonyms**

NPR2; natriuretic peptide receptor B/guanylate cyclase B (atrio-natriuretic peptide receptor B); acromesomelic dysplasia, Maroteaux type , AMDM, ANPRB, NPRB; atrial natriuretic peptide receptor 2; ANPb; GUCY2B; GC-B; ANP-B; NPR-B; ANPR-B; guanylate cyclase B; atrial natriuretic peptide B-type receptor; atrial natriuretic peptide receptor type B; AMDM; NPRB; ANPRB; GUC2B; NPRBi;

**Gene ID**

[4882](#)

**mRNA Refseq**

[NM\\_003995](#)

 Tel: 1-631-559-9269 1-516-512-3133

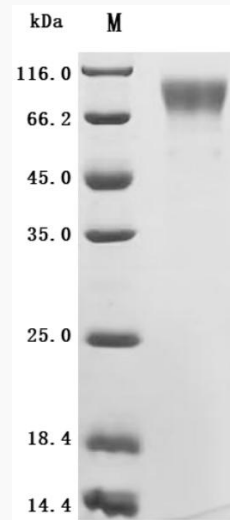
 Email: [info@creative-biomart.com](mailto:info@creative-biomart.com)  Fax: 1-631-938-8127

 45-1 Ramsey Road, Shirley, NY 11967, USA

**protein Refseq** NP\_003986

**MIM** 108961

**SDS-PAGE**



 Tel: 1-631-559-9269 1-516-512-3133

 Email: [info@creative-biomart.com](mailto:info@creative-biomart.com)  Fax: 1-631-938-8127

 45-1 Ramsey Road, Shirley, NY 11967, USA