

Recombinant Human NPR2 protein, His&Myc-tagged

Cat. No. NPR2-5901H Lot. No. (See product label)

SPECIFICATION

Product Overview	Recombinant Human NPR2 protein(P20594)(23-458aa), fused to N-terminal His tag and C-terminal Myc tag, was expressed in Insect cell.
Species	Human
Source	Insect Cells
ProteinLength	23-458aa
Form	If the delivery form is liquid, the default storage buffer is Tris/PBS-based buffer, 5%-50% glycerol. If the delivery form is lyophilized powder, the buffer before lyophilization is Tris/PBS-based buffer, 6% Trehalose, pH 8.0.
Molecular Mass	52.4 kDa
Purity	Greater than 85% as determined by SDS-PAGE.
Storage	Store at -20°C/-201°C upon receipt, aliquoting is necessary for mutiple use. Avoid repeated freeze-thaw cycles.
Reconstitution	Please reconstitute protein in deionized sterile water to a concentration of 0.1-1.0 mg/mL. We recommend to add 5-50% of glycerol (final concentration) and aliquot for long-term storage at -20°C/-80°C. Our default final concentration of glycerol is 171%.

GENE INFORMATION

 Tel: 1-631-559-9269 1-516-512-3133

 Email: info@creative-biomart.com  Fax: 1-631-938-8127

 45-1 Ramsey Road, Shirley, NY 11967, USA

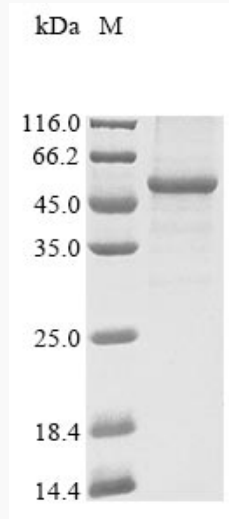
Gene Name	NPR2 natriuretic peptide receptor B/guanylate cyclase B (atrionatriuretic peptide receptor B) [Homo sapiens]
Official Symbol	NPR2
Synonyms	NPR2; natriuretic peptide receptor B/guanylate cyclase B (atrionatriuretic peptide receptor B); acromesomic dysplasia, Maroteaux type , AMDM, ANPRB, NPRB; atrial natriuretic peptide receptor 2; ANPb; GUCY2B; GC-B; ANP-B; NPR-B; ANPR-B; guanylate cyclase B; atrial natriuretic peptide B-type receptor; atrial natriuretic peptide receptor type B; AMDM; NPRB; ANPRB; GUC2B; NPRBi;
Gene ID	4882
mRNA Refseq	NM_003995
Protein Refseq	NP_003986
MIM	108961
UniProt ID	P20594

 Tel: 1-631-559-9269 1-516-512-3133

 Email: info@creative-biomart.com  Fax: 1-631-938-8127

 45-1 Ramsey Road, Shirley, NY 11967, USA

SDS-PAGE



 Tel: 1-631-559-9269 1-516-512-3133

 Email: info@creative-biomart.com  Fax: 1-631-938-8127

 45-1 Ramsey Road, Shirley, NY 11967, USA