

Recombinant Human NPR2 Protein (23-458 aa), His-SUMO-tagged

Cat. No. NPR2-691H **Lot. No.** (See product label)

SPECIFICATION

Product Overview	Recombinant Human NPR2 Protein (23-458 aa) is produced by E. coli expression system. This protein is fused with a 6xHis-SUMO tag at the N-terminal. Research Area: Cardiovascular. Protein Description: Partial.
Species	Human
Source	E.coli
ProteinLength	23-458 aa
Description	Receptor for the C-type natriuretic peptide NPPC/CNP hormone. Has guanylate cyclase activity upon binding of its ligand. May play a role in the regulation of skeletal growth.
Form	Tris-based buffer, 50% glycerol
Molecular Mass	64.5 kDa
AA Sequence	RNLT LAVVLPEHNLSYAWAWPRVGPVALAVEALGRALPVDLRFVSSELEGACSEY LAPLSAVDLKLYHDPDLLLGGPGCVYPAASVARFASHWRLPLLTAGAVASGFSKND HYRTLVRTGPSAPKLGFEVVTLHGHFNWTARAALLYLDARTDDRPHYFTIEGVFEAL QGSNLSVQHQVYAREPGGPEQATHFIRANGRIVYICGPLEMLHEILLQAQRENLTNG DYVFFYLDVFGESLRAGPTRATGRPWQDNRTREQAQALREAFQTVLVITYREPPNP EYQEFQNRLLIRAREDFGVELGPSLMNLIAGCFYDGILLYAEVLNETIQEGGTREDGL

 Tel: 1-631-559-9269 1-516-512-3133

 Email: info@creative-biomart.com  Fax: 1-631-938-8127

 45-1 Ramsey Road, Shirley, NY 11967, USA

RIVEKMQGRRRYHGVTGLVVMDKNNDRETDFVLWAMGDLDSGDFQPAAHYSGAEK
 QIWWTGRPIPVVKGAPPSDNPPCAFDLDDPSCDKTPLSTLAI

Purity > 90% as determined by SDS-PAGE.

Notes Repeated freezing and thawing is not recommended. Store working aliquots at 4 centigrade for up to one week.

Storage The shelf life is related to many factors, storage state, buffer ingredients, storage temperature and the stability of the protein itself. Generally, the shelf life of liquid form is 6 months at -20 centigrade/-80 centigrade. The shelf life of lyophilized form is 12 months at -20 centigrade/-80 centigrade.

Concentration A hardcopy of COA with concentration instruction is sent along with the products.

GENE INFORMATION

Gene Name NPR2 natriuretic peptide receptor B/guanylate cyclase B (atrio-natriuretic peptide receptor B) [Homo sapiens]

Official Symbol NPR2

Synonyms NPR2; ANPb; GUCY2B; GC-B; ANP-B; NPR-B; ANPR-B; AMDM; NPRB; ANPRB; GUC2B; NPRBj;

Gene ID 4882

mRNA Refseq NM_003995

Protein Refseq NP_003986

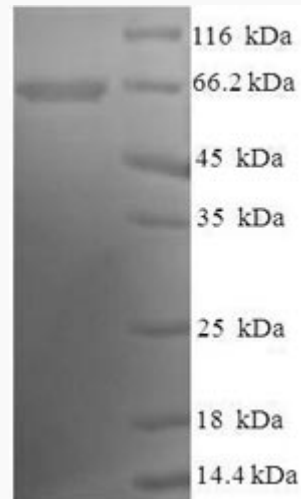
 Tel: 1-631-559-9269 1-516-512-3133

 Email: info@creative-biomart.com  Fax: 1-631-938-8127

 45-1 Ramsey Road, Shirley, NY 11967, USA

MIM 108961

UniProt ID P20594



(Tris-Glycine gel) Discontinuous SDS-PAGE (reduced) with 5% enrichment gel and 15% separation gel.

Tel: 1-631-559-9269 1-516-512-3133

Email: info@creative-biomart.com Fax: 1-631-938-8127

45-1 Ramsey Road, Shirley, NY 11967, USA