

## Recombinant Human NPTN Protein (Gln29-His220), C-His tagged

Cat. No. NPTN-4190H Lot. No. (See product label)

### SPECIFICATION

<b>Product Overview</b>	Recombinant human NPTN (Gln29-His220) fused with the C-terminal His tag was expressed in Mammalian cells.
<b>Species</b>	Human
<b>Source</b>	Mammalian Cells
<b>ProteinLength</b>	Gln29-His220
<b>Form</b>	Lyophilized powder/frozen liquid
<b>Molecular Mass</b>	21.12 kDa
<b>Purity</b>	>90% as determined by SDS-PAGE.
<b>Notes</b>	For research use only.
<b>Storage</b>	Use a manual defrost freezer and avoid repeated freeze thaw cycles. Store at 2 to 8 centigrade for one week. Store at -20 to -80 centigrade for twelve months from the date of receipt.
<b>Storage Buffer</b>	Supplied as solution form in PBS or lyophilized from PBS.
<b>Reconstitution</b>	Reconstitute in sterile water for a stock solution.

 Tel: 1-631-559-9269 1-516-512-3133

 Email: [info@creative-biomart.com](mailto:info@creative-biomart.com)  Fax: 1-631-938-8127

 45-1 Ramsey Road, Shirley, NY 11967, USA

**Shipping** They are shipped out with dry ice/blue ice unless customers require otherwise.

## GENE INFORMATION

**Gene Name** NPTN neuroplastin [ Homo sapiens (human) ]

**Official Symbol** NPTN

**Synonyms** NPTN; neuroplastin; SDFR1, stromal cell derived factor receptor 1; GP55; GP65; np55; np65; SDR1; SDR-1; stromal cell-derived receptor 1; stromal cell derived factor receptor 1; SDFR1; MGC102805; DKFZp686L2477;

**Gene ID** 27020

**mRNA Refseq** NM\_001161363

**Protein Refseq** NP\_001154835

**MIM** 612820

**UniProt ID** Q9Y639

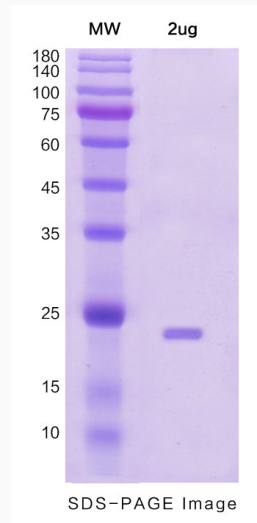
 Tel: 1-631-559-9269 1-516-512-3133

 Email: [info@creative-biomart.com](mailto:info@creative-biomart.com)  Fax: 1-631-938-8127

 45-1 Ramsey Road, Shirley, NY 11967, USA



SDS-PAGE



Tel: 1-631-559-9269 1-516-512-3133

Email: [info@creative-biomart.com](mailto:info@creative-biomart.com) Fax: 1-631-938-8127

45-1 Ramsey Road, Shirley, NY 11967, USA