

Recombinant Full Length Human NPTX2 Protein, C-Flag-tagged

Cat. No. NPTX2-705HFL **Lot. No.** (See product label)

SPECIFICATION

Product Overview	Recombinant Full Length Human NPTX2 Protein, fused to Flag-tag at C-terminus, was expressed in Mammalian cells.
Species	Human
Source	Mammalian Cells
Description	This gene encodes a member of the family of neuronal petraxins, synaptic proteins that are related to C-reactive protein. This protein is involved in excitatory synapse formation. It also plays a role in clustering of alpha-amino-3-hydroxy-5-methyl-4-isoxazole propionic acid (AMPA)-type glutamate receptors at established synapses, resulting in non-apoptotic cell death of dopaminergic nerve cells. Up-regulation of this gene in Parkinson disease (PD) tissues suggests that the protein may be involved in the pathology of PD.
Form	25 mM Tris HCl, pH 7.3, 100 mM glycine, 10% glycerol.
Molecular Mass	46.9 kDa
AA Sequence	MLALLAASVALAVAAGAQDSPAPGSRFVCTALPPEAVHAGCPLPAMPMQGGAQSP EEELRAAVLQLRETV VQQKETLGAQREAIKRELTGKLARCEGLAGGKARGAGATGKD TMGDLPRDPGHVVEQLSRSLQTLKDRLES LEHQLRANVSNAGLPGDFREVLQQRL GELERQLLRKVAELEDEKSLHNETSAHRQKTESTLNALLQRVT ELERGNSAFKSP DAFKVSLPLRTNYLYGKIKKTLPELYAFTICLWLRSSASPGIGTPFSYAVPGQANEIV L

 Tel: 1-631-559-9269 1-516-512-3133

 Email: info@creative-biomart.com  Fax: 1-631-938-8127

 45-1 Ramsey Road, Shirley, NY 11967, USA

IEWGNNPIELLINDKVAQLPLFVSDGKWHHICVTWTTTRDGMWEAFQDGEKLGTTGEN
 LAPWHPIKPGGV L ILGQEQDTVGGRFDATQAFVSGELSQFNIWDRVLRAQEIVNIANC
 STNMPGNIIPWVDNNVDVFGGASKWP
 VETCEERLLDLTRTRPLEQKLISEEDLAANDILDYKDDDDKV

Purity > 80% as determined by SDS-PAGE and Coomassie blue staining.

Stability Stable for 12 months from the date of receipt of the product under proper storage and handling conditions. Avoid repeated freeze-thaw cycles.

Storage Store at -80 centigrade.

Concentration >50 ug/mL as determined by microplate BCA method.

Preparation Recombinant protein was captured through anti-DDK affinity column followed by conventional chromatography steps.

Protein Families Secreted Protein

Full Length Full L.

GENE INFORMATION

Gene Name NPTX2 neuronal pentraxin 2 [Homo sapiens (human)]

Official Symbol NPTX2

Synonyms NP2; NARP; NP-II

Gene ID 4885

 Tel: 1-631-559-9269 1-516-512-3133

 Email: info@creative-biomart.com  Fax: 1-631-938-8127

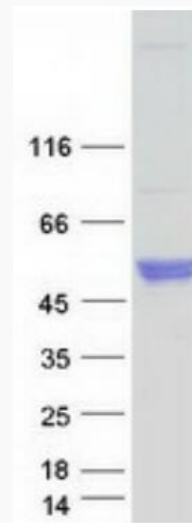
 45-1 Ramsey Road, Shirley, NY 11967, USA

mRNA Refseq [NM_002523.3](#)

Protein Refseq [NP_002514.1](#)

MIM [600750](#)

UniProt ID [P47972](#)



Coomassie blue staining of purified NPTX2 protein.

 Tel: 1-631-559-9269 1-516-512-3133

 Email: info@creative-biomart.com  Fax: 1-631-938-8127

 45-1 Ramsey Road, Shirley, NY 11967, USA