

## Recombinant Human NPY protein, Fc-tagged

Cat. No. NPY-262H Lot. No. (See product label)

### SPECIFICATION

<b>Product Overview</b>	Recombinant Human NPY protein(NP_000896.1) (Tyr29-Tyr64) was expressed in HEK293 with the Fc region of human IgG1 at the N-terminus.
<b>Species</b>	Human
<b>Source</b>	HEK293
<b>ProteinLength</b>	29-64 aa
<b>Form</b>	Lyophilized from sterile PBS, pH 7.4.
<b>Molecular Mass</b>	The recombinant human NPY consists 296 amino acids and predicts a molecular mass of 32.7 kDa.
<b>Endotoxin</b>	< 1.0 EU per µg of the protein as determined by the LAL method.
<b>Purity</b>	> 95 % as determined by SDS-PAGE
<b>Storage</b>	Store it under sterile conditions at -20°C to -80°C upon receiving. Recommend to aliquot the protein into smaller quantities for optimal storage. Avoid repeated freeze-thaw cycles.
<b>Reconstitution</b>	It is recommended that sterile water be added to the vial to prepare a stock solution of 0.2 ug/ul. Centrifuge the vial at 4°C before opening to recover the entire contents.

 Tel: 1-631-559-9269 1-516-512-3133

 Email: [info@creative-biomart.com](mailto:info@creative-biomart.com)  Fax: 1-631-938-8127

 45-1 Ramsey Road, Shirley, NY 11967, USA

<b>protein Refseq-Weblink</b>	<a href="http://www.ncbi.nlm.nih.gov/protein/NP_000896.1">http://www.ncbi.nlm.nih.gov/protein/NP_000896.1</a>
-------------------------------	---

<b>Unit ID</b>	P01303
----------------	--------

<b>Unit ID-Weblink</b>	<a href="http://www.uniprot.org/uniprot/P01303">http://www.uniprot.org/uniprot/P01303</a>
------------------------	---

## GENE INFORMATION

<b>Gene Name</b>	NPY neuropeptide Y [ Homo sapiens ]
------------------	-------------------------------------

<b>Official Symbol</b>	NPY
------------------------	-----

<b>Synonyms</b>	NPY; neuropeptide Y; pro-neuropeptide Y; PYY4;
-----------------	--

<b>Gene ID</b>	4852
----------------	------

<b>mRNA Refseq</b>	<a href="#">NM_000905</a>
--------------------	---------------------------

<b>protein Refseq</b>	NP_000896
-----------------------	-----------

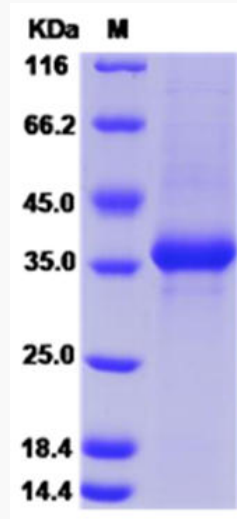
<b>MIM</b>	162640
------------	--------

 Tel: 1-631-559-9269 1-516-512-3133

 Email: [info@creative-biomart.com](mailto:info@creative-biomart.com)  Fax: 1-631-938-8127

 45-1 Ramsey Road, Shirley, NY 11967, USA

**SDS-PAGE**



 Tel: 1-631-559-9269 1-516-512-3133

 Email: [info@creative-biomart.com](mailto:info@creative-biomart.com)  Fax: 1-631-938-8127

 45-1 Ramsey Road, Shirley, NY 11967, USA