

Recombinant Human NPY Protein, GST-tagged

Cat. No. NPY-6052H **Lot. No.** (See product label)

SPECIFICATION

| | |
|-------------------------|---|
| Product Overview | Human NPY full-length ORF (AAH29497, 1 a.a. - 97 a.a.) recombinant protein with GST-tag at N-terminal. |
| Species | Human |
| Source | Wheat Germ |
| Description | This gene encodes a neuropeptide that is widely expressed in the central nervous system and influences many physiological processes, including cortical excitability, stress response, food intake, circadian rhythms, and cardiovascular function. The neuropeptide functions through G protein-coupled receptors to inhibit adenylyl cyclase, activate mitogen-activated protein kinase (MAPK), regulate intracellular calcium levels, and activate potassium channels. A polymorphism in this gene resulting in a change of leucine 7 to proline in the signal peptide is associated with elevated cholesterol levels, higher alcohol consumption, and may be a risk factor for various metabolic and cardiovascular diseases. The protein also exhibits antimicrobial activity against bacteria and fungi. [provided by RefSeq, Oct 2014] |
| Molecular Mass | 36.41 kDa |
| AA Sequence | MLGNKRLGLSGLTLALSLLVCLGALAEAYPSKPDNPGEDAPAEDMARYYSALRHYYIN LITRQRYGKRSSPETLISDLLMRESTENVPRTRELPAMW |
| Applications | Enzyme-linked Immunoabsorbent Assay Western Blot (Recombinant protein) |

 Tel: 1-631-559-9269 1-516-512-3133

 Email: info@creative-biomart.com  Fax: 1-631-938-8127

 45-1 Ramsey Road, Shirley, NY 11967, USA



| | |
|-----------------------|--|
| | Antibody Production Protein Array |
| Notes | Best use within three months from the date of receipt of this protein. |
| Storage | Store at -80 centigrade. Aliquot to avoid repeated freezing and thawing. |
| Storage Buffer | 50 mM Tris-HCl, 10 mM reduced Glutathione, pH=8.0 in the elution buffer. |

GENE INFORMATION

| | |
|------------------------|--|
| Gene Name | NPY neuropeptide Y [Homo sapiens] |
| Official Symbol | NPY |
| Synonyms | NPY; neuropeptide Y; pro-neuropeptide Y; PYY4; |
| Gene ID | 4852 |
| mRNA Refseq | NM_000905 |
| Protein Refseq | NP_000896 |
| MIM | 162640 |
| UniProt ID | P01303 |

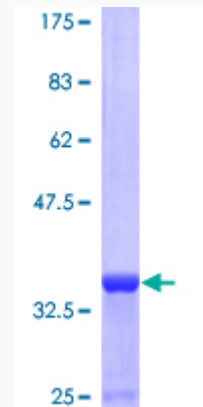
Tel: 1-631-559-9269 1-516-512-3133

Email: info@creative-biomart.com Fax: 1-631-938-8127

45-1 Ramsey Road, Shirley, NY 11967, USA

Quality Control

Testing:



12.5% SDS-PAGE Stained with Coomassie Blue.

 Tel: 1-631-559-9269 1-516-512-3133

 Email: info@creative-biomart.com  Fax: 1-631-938-8127

 45-1 Ramsey Road, Shirley, NY 11967, USA