

Recombinant Human NPY1R Protein, His-tagged

Cat. No. NPY1R-2505H Lot. No. (See product label)

SPECIFICATION

Product Overview	Recombinant Human NPY1R Protein (Phe282-Ile384) with a N-His tag was expressed in E. coli.
Species	Human
Source	E.coli
ProteinLength	Phe282-Ile384
Description	This gene belongs to the G-protein-coupled receptor superfamily. The encoded transmembrane protein mediates the function of neuropeptide Y (NPY), a neurotransmitter, and peptide YY (PYY), a gastrointestinal hormone. The encoded receptor undergoes fast agonist-induced internalization through clathrin-coated pits and is subsequently recycled back to the cell membrane. Activation of Y1 receptors may result in mobilization of intracellular calcium and inhibition of adenylate cyclase activity.
Form	Freeze-dried powder
Molecular Mass	Predicted Molecular Mass: 15.8 kDa Accurate Molecular Mass: 16 kDa
Endotoxin	<1.0 EU per 1g (determined by the LAL method).
Purity	> 90%

 Tel: 1-631-559-9269 1-516-512-3133

 Email: info@creative-biomart.com  Fax: 1-631-938-8127

 45-1 Ramsey Road, Shirley, NY 11967, USA

Applications	Positive Control; Immunogen; SDS-PAGE; WB.
Stability	The thermal stability is described by the loss rate. The loss rate was determined by accelerated thermal degradation test, that is, incubate the protein at 37 centigrade for 48h, and no obvious degradation and precipitation were observed. The loss rate is less than 5% within the expiration date under appropriate storage condition.
Storage	Avoid repeated freeze/thaw cycles. Store at 2-8 centigrade for one month. Aliquot and store at -80 centigrade for 12 months.
Storage Buffer	PBS, pH7.4, containing 0.01% SKL, 1mM DTT, 5% Trehalose and Proclin300.
Reconstitution	Reconstitute in 20mM Tris, 150mM NaCl (pH8.0) to a concentration of 0.1-1.0 mg/mL. Do not vortex.

GENE INFORMATION

Gene Name	NPY1R neuropeptide Y receptor Y1 [Homo sapiens (human)]
Official Symbol	NPY1R
Synonyms	NPY1R; neuropeptide Y receptor Y1; NPYR; neuropeptide Y receptor type 1; NPY1-R;
Gene ID	4886
mRNA Refseq	NM_000909
Protein Refseq	NP_000900
MIM	162641

 Tel: 1-631-559-9269 1-516-512-3133

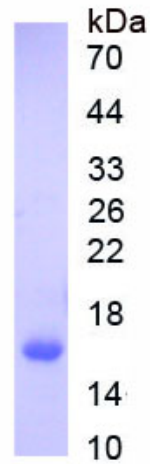
 Email: info@creative-biomart.com  Fax: 1-631-938-8127

 45-1 Ramsey Road, Shirley, NY 11967, USA



UniProt ID

P25929



Tel: 1-631-559-9269 1-516-512-3133

Email: info@creative-biomart.com Fax: 1-631-938-8127

45-1 Ramsey Road, Shirley, NY 11967, USA