

Recombinant Human NPY1R Protein, GST-tagged

Cat. No. NPY1R-6056H Lot. No. (See product label)

SPECIFICATION

Product Overview	Human NPY1R full-length ORF (AAH36657, 1 a.a. - 384 a.a.) recombinant protein with GST-tag at N-terminal.
Species	Human
Source	Wheat Germ
Description	<p>Neuropeptide Y (NPY; MIM 162640) is one of the most abundant neuropeptides in the mammalian nervous system and exhibits a diverse range of important physiologic activities, including effects on psychomotor activity, food intake, regulation of central endocrine secretion, and potent vasoactive effects on the cardiovascular system. Two major subtypes of NPY (Y1 and Y2) have been defined by pharmacologic criteria. NPY receptors, such as NPY1R, have been identified in a variety of tissues, including brain, spleen, small intestine, kidney, testis, placenta, and aortic smooth muscle (Herzog et al., 1992 [PubMed 1321422]).[supplied by OMIM</p>
Molecular Mass	67.98 kDa
AA Sequence	<p>MNSTLFSQVENHSVHSNFSEKNAQLLAFENDDCHLPLAMIFTLALAYGAVIILGVSGN LALIIILKQKEMRNVNINILVNLFSDLLVAIMCLPFTFVYTLMDHWVFGTEAMCKLNPF VQCVPITVSIFSLVLI AVERHQLIINPRGWRPNNRHAYVGI A VIWVLAVASSLPFLIYQV MTDEPFQNVTLDAYKDKYVCFDQFP S DSHRLSYTTLLLVLQYFGPLCFIFICYFKIYIR LKRRNNMMDKMRDNKYRSSETKRINIMLLSIVVAFVAVCWLP L TIFNTVYDWNHQIAT CNHLLFLLCHLTAMISTCVNPIFYGFLNKNFQRDLQFFNFCDFRSRDDDYETIAMS</p>

 Tel: 1-631-559-9269 1-516-512-3133

 Email: info@creative-biomart.com  Fax: 1-631-938-8127

 45-1 Ramsey Road, Shirley, NY 11967, USA

TMHTDVSKTSLKQASPVAFKKINNDDNEKI

Applications

Enzyme-linked Immunoabsorbent Assay
 Western Blot (Recombinant protein)
 Antibody Production
 Protein Array

Notes

Best use within three months from the date of receipt of this protein.

Storage

Store at -80 centigrade. Aliquot to avoid repeated freezing and thawing.

Storage Buffer

50 mM Tris-HCl, 10 mM reduced Glutathione, pH=8.0 in the elution buffer.

GENE INFORMATION

Gene Name

NPY1R neuropeptide Y receptor Y1 [Homo sapiens]

Official Symbol

NPY1R

Synonyms

NPY1R; neuropeptide Y receptor Y1; NPYR; neuropeptide Y receptor type 1; NPY1-R;

Gene ID

4886

mRNA Refseq

NM_000909

Protein Refseq

NP_000900

MIM

162641

UniProt ID

P25929

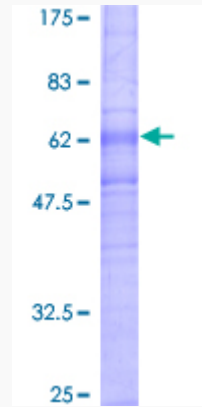
 Tel: 1-631-559-9269 1-516-512-3133

 Email: info@creative-biomart.com  Fax: 1-631-938-8127

 45-1 Ramsey Road, Shirley, NY 11967, USA

Quality Control

Testing:



12.5% SDS-PAGE Stained with Coomassie Blue.

 Tel: 1-631-559-9269 1-516-512-3133

 Email: info@creative-biomart.com  Fax: 1-631-938-8127

 45-1 Ramsey Road, Shirley, NY 11967, USA