

Recombinant Human NR1D1 Protein, His-tagged

Cat. No. NR1D1-03H Lot. No. (See product label)

SPECIFICATION

Product Overview	Recombinant Human NR1D1 Protein(NP_068370)(Met1~Ala325), fused to N-terminal His tag, was expressed in E.coli.
Species	Human
Source	E.coli
ProteinLength	Met1~Ala325
Form	20mM Tris, 150mM NaCl, pH8.0, containing 1mM EDTA, 1mM DTT, 0.01% SKL, 5% Trehalose and Proclin300.
Molecular Mass	44kDa as determined by SDS-PAGE reducing conditions
Endotoxin	<1.0EU per 1g (determined by the LAL method)
Purity	> 95%
Applications	Positive Control; Immunogen; SDS-PAGE; WB.
Stability	The thermal stability is described by the loss rate. The loss rate was determined by accelerated thermal degradation test, that is, incubate the protein at 37°C for 48h, and no obvious degradation and precipitation were observed. The loss rate is less than 5% within the expiration date under appropriate storage condition.

 Tel: 1-631-559-9269 1-516-512-3133

 Email: info@creative-biomart.com  Fax: 1-631-938-8127

 45-1 Ramsey Road, Shirley, NY 11967, USA

Storage	Avoid repeated freeze/thaw cycles. Store at 2-8°C for one month. Aliquot and store at -80°C for 12 months.
Concentration	200g/mL
Reconstitution	Reconstitute in 20mM Tris, 150mM NaCl (pH8.0) to a concentration of 0.1-1.0 mg/mL. Do not vortex.

GENE INFORMATION

Gene Name	NR1D1 nuclear receptor subfamily 1, group D, member 1 [Homo sapiens]
Official Symbol	NR1D1
Synonyms	NR1D1; nuclear receptor subfamily 1, group D, member 1; THRAL; nuclear receptor subfamily 1 group D member 1; ear 1; hRev; Rev ErbAalpha; THRA1; Rev-ErbAalpha; rev-erbA-alpha; V-erbA-related protein 1; nuclear receptor Rev-ErbA-alpha; EAR1; ear-1;
Gene ID	9572
mRNA Refseq	NM_021724
Protein Refseq	NP_068370
MIM	602408
UniProt ID	P20393

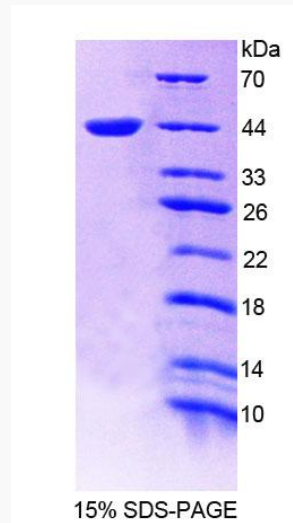
 Tel: 1-631-559-9269 1-516-512-3133

 Email: info@creative-biomart.com  Fax: 1-631-938-8127

 45-1 Ramsey Road, Shirley, NY 11967, USA



SDS-PAGE



Tel: 1-631-559-9269 1-516-512-3133

Email: info@creative-biomart.com Fax: 1-631-938-8127

45-1 Ramsey Road, Shirley, NY 11967, USA