

# Active Recombinant Full Length Human NR1H2 Protein, C-Flag-tagged

**Cat. No.** NR1H2-226HFL    **Lot. No.** (See product label)

## SPECIFICATION

<b>Product Overview</b>	Recombinant Full Length Human NR1H2 Protein, fused to Flag-tag at C-terminus, was expressed in Mammalian cells.
<b>Species</b>	Human
<b>Source</b>	Mammalian Cells
<b>Description</b>	The liver X receptors, LXRA and LXR <sub>B</sub> , form a subfamily of the nuclear receptor superfamily and are key regulators of macrophage function, controlling transcriptional programs involved in lipid homeostasis and inflammation. The inducible LXRA is highly expressed in liver, adrenal gland, intestine, adipose tissue, macrophages, lung, and kidney, whereas LXR <sub>B</sub> is ubiquitously expressed. Ligand-activated LXRs form obligate heterodimers with retinoid X receptors and regulate expression of target genes containing LXR response elements.
<b>Form</b>	25 mM Tris HCl, pH 7.3, 100 mM glycine, 10% glycerol.
<b>Bio-activity</b>	Surface Plasmon Resonance (SPR)
<b>Molecular Mass</b>	50.9 kDa
<b>AA Sequence</b>	MSSPTTSSLDTPLPGNGPPQPGAPSSSPTVKEEGPEPWGGPDPDVPGTDEASSA CSTDWVIPDPEEEPE RKRKKGPAKMLGHELRCRVC GDKASGFHYNVLSCEGCKGF FRRSVVRGGARRYACRGGGTCQMDAFMRRK CQQCRLRKCKEAGMREQCVLSEE

 Tel: 1-631-559-9269    1-516-512-3133

 Email: [info@creative-biomart.com](mailto:info@creative-biomart.com)     Fax: 1-631-938-8127

 45-1 Ramsey Road, Shirley, NY 11967, USA

QIRKKKIRKQQQQESQSQSQSPVGPQGSSSSASGPGASPGGSEAGSQ GSGEGEG  
 VQLTAAQELMIQQLVAAQLQCNKRSFSDQPKVTPWPLGADPQSRDARQQRFHFT  
 ELAIISVQ EIVDFAKQVPGFLQLGREDQIALLKASTIEIMLLETARRYNHETECITFLKD  
 FTYSKDDFHFRAGLQVEFI NPIFEFSRAMRRLGLDDAEYALLIAINIFSADRPNVQEPG  
 RVEALQQPYVEALLSYTRIKRPQDQLRFPR  
 MLMKLVSLRTLSSVHSEQVFALRLQDKKLPPLLSEIWDVHETRTRPLEQKLISEEDLA  
 ANDILDYKDDDDKV

<b>Purity</b>	> 80% as determined by SDS-PAGE and Coomassie blue staining.
<b>Stability</b>	Stable for 12 months from the date of receipt of the product under proper storage and handling conditions. Avoid repeated freeze-thaw cycles.
<b>Storage</b>	Store at -80 centigrade.
<b>Concentration</b>	>50 ug/mL as determined by microplate BCA method.
<b>Preparation</b>	Recombinant protein was captured through anti-DDK affinity column followed by conventional chromatography steps.
<b>Protein Families</b>	Druggable Genome, Nuclear Hormone Receptor, Transcription Factors
<b>Full Length</b>	Full L.

## GENE INFORMATION

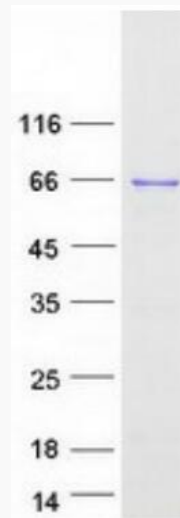
<b>Gene Name</b>	NR1H2 nuclear receptor subfamily 1 group H member 2 [ Homo sapiens (human) ]
<b>Official Symbol</b>	NR1H2
<b>Synonyms</b>	NER; UNR; LXRB; LXR-b; NER-I; RIP15

 Tel: 1-631-559-9269 1-516-512-3133

 Email: [info@creative-biomart.com](mailto:info@creative-biomart.com)  Fax: 1-631-938-8127

 45-1 Ramsey Road, Shirley, NY 11967, USA

Gene ID	7376
mRNA Refseq	NM_007121.7
Protein Refseq	NP_009052.4
MIM	600380
UniProt ID	P55055



Coomassie blue staining of purified NR1H2 protein.

 Tel: 1-631-559-9269 1-516-512-3133

 Email: [info@creative-biomart.com](mailto:info@creative-biomart.com)  Fax: 1-631-938-8127

 45-1 Ramsey Road, Shirley, NY 11967, USA