

Recombinant Human NR1H2 protein

Cat. No. NR1H2-2279H Lot. No. (See product label)

SPECIFICATION

Product Overview	Recombinant Human NR1H2 protein(P55055)(212-460aa) was expressed in E.coli.
Species	Human
Source	E.coli
ProteinLength	212-460aa
Form	If the delivery form is liquid, the default storage buffer is Tris/PBS-based buffer, 5%-50% glycerol. If the delivery form is lyophilized powder, the buffer before lyophilization is Tris/PBS-based buffer, 6% Trehalose, pH 8.0.
Molecular Mass	28.7 kDa
Purity	Greater than 90% as determined by SDS-PAGE.
Storage	Store at -20°C/-80°C upon receipt, aliquoting is necessary for mutiple use. Avoid repeated freeze-thaw cycles.
Reconstitution	We recommend that this vial be briefly centrifuged prior to opening to bring the contents to the bottom. Please reconstitute protein in deionized sterile water to a concentration of 0.1-1.0 mg/mL. We recommend to add 5-50% of glycerol (final concentration) and aliquot for long-term storage at -20°C/-80°C.
AA Sequence	GEGEGVQLTAAQELMIQQLVAAQLQCENKRSFSDQPKVTPWPLGADPQSRDARQQ

 Tel: 1-631-559-9269 1-516-512-3133

 Email: info@creative-biomart.com  Fax: 1-631-938-8127

 45-1 Ramsey Road, Shirley, NY 11967, USA

RFAHFTELAIIISVQEIVDFAKQVPGFLQLGREDQIALLKASTIEIMLLETARRYNHETEC
 ITFLKDFTYSKDDFHRAGLQVEFINPIFEFSRAMRRLGLDDAEYALLIAINIFSADRPNV
 QEPGRVEALQQPYVEALLSYTRIKRPQDQLRFPRMLMKLVSLRTLSSVHSEQVFALR
 LQDKKLPPLLSEIWDVHE

GENE INFORMATION

Gene Name NR1H2 nuclear receptor subfamily 1, group H, member 2 [Homo sapiens]

Official Symbol NR1H2

Synonyms NR1H2; nuclear receptor subfamily 1, group H, member 2; ubiquitously expressed nuclear receptor , UNR; oxysterols receptor LXR-beta; liver X receptor beta; LXR b; NER; NER I; RIP15; LX receptor beta; nuclear receptor NER; liver X nuclear receptor beta; nuclear orphan receptor LXR-beta; steroid hormone-nuclear receptor NER; ubiquitously-expressed nuclear receptor; UNR; LXRB; LXR-b; NER-I; FLJ17564;

Gene ID 7376

mRNA Refseq NM_001256647

Protein Refseq NP_001243576

MIM 600380

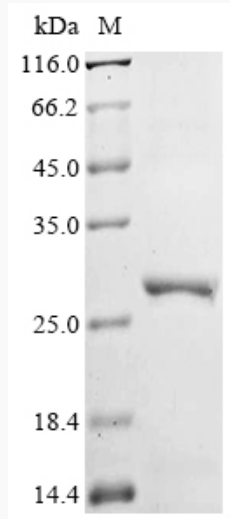
UniProt ID P55055

 Tel: 1-631-559-9269 1-516-512-3133

 Email: info@creative-biomart.com  Fax: 1-631-938-8127

 45-1 Ramsey Road, Shirley, NY 11967, USA

SDS-PAGE



 Tel: 1-631-559-9269 1-516-512-3133

 Email: info@creative-biomart.com  Fax: 1-631-938-8127

 45-1 Ramsey Road, Shirley, NY 11967, USA