

# Recombinant Human NR1H2 Protein (Lys72-Glu460), N-His tagged

Cat. No. NR1H2-5157H Lot. No. (See product label)

## SPECIFICATION

|                         |                                                                                                                                                                                         |
|-------------------------|-----------------------------------------------------------------------------------------------------------------------------------------------------------------------------------------|
| <b>Product Overview</b> | Recombinant human NR1H2 / LXRb (Lys72-Glu460) fused with the N-His tag was expressed in E. coli.                                                                                        |
| <b>Species</b>          | Human                                                                                                                                                                                   |
| <b>Source</b>           | E.coli                                                                                                                                                                                  |
| <b>ProteinLength</b>    | Lys72-Glu460                                                                                                                                                                            |
| <b>Form</b>             | Lyophilized powder/frozen liquid                                                                                                                                                        |
| <b>Molecular Mass</b>   | 46.05 kDa                                                                                                                                                                               |
| <b>Purity</b>           | >90% as determined by SDS-PAGE.                                                                                                                                                         |
| <b>Notes</b>            | For research use only.                                                                                                                                                                  |
| <b>Storage</b>          | Use a manual defrost freezer and avoid repeated freeze thaw cycles. Store at 2 to 8 centigrade for one week. Store at -20 to -80 centigrade for twelve months from the date of receipt. |
| <b>Storage Buffer</b>   | 0.01M PBS, pH 7.4, 0.02% NLS                                                                                                                                                            |
| <b>Reconstitution</b>   | Reconstitute in sterile water for a stock solution.                                                                                                                                     |

 Tel: 1-631-559-9269 1-516-512-3133

 Email: [info@creative-biomart.com](mailto:info@creative-biomart.com)  Fax: 1-631-938-8127

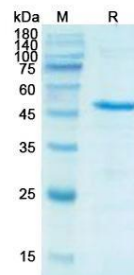
 45-1 Ramsey Road, Shirley, NY 11967, USA

**Shipping** They are shipped out with dry ice/blue ice unless customers require otherwise.

## GENE INFORMATION

|                        |                                                                                                                                                                                                                                                                                                                                                                                                                 |
|------------------------|-----------------------------------------------------------------------------------------------------------------------------------------------------------------------------------------------------------------------------------------------------------------------------------------------------------------------------------------------------------------------------------------------------------------|
| <b>Gene Name</b>       | NR1H2 nuclear receptor subfamily 1, group H, member 2 [ Homo sapiens (human) ]                                                                                                                                                                                                                                                                                                                                  |
| <b>Official Symbol</b> | NR1H2                                                                                                                                                                                                                                                                                                                                                                                                           |
| <b>Synonyms</b>        | NR1H2; nuclear receptor subfamily 1, group H, member 2; ubiquitously expressed nuclear receptor, UNR; oxysterols receptor LXR-beta; liver X receptor beta; LXR b; NER; NER I; RIP15; LX receptor beta; nuclear receptor NER; liver X nuclear receptor beta; nuclear orphan receptor LXR-beta; steroid hormone-nuclear receptor NER; ubiquitously-expressed nuclear receptor; UNR; LXRB; LXR-b; NER-I; FLJ17564; |
| <b>Gene ID</b>         | 7376                                                                                                                                                                                                                                                                                                                                                                                                            |
| <b>mRNA Refseq</b>     | NM_001256647                                                                                                                                                                                                                                                                                                                                                                                                    |
| <b>Protein Refseq</b>  | NP_001243576                                                                                                                                                                                                                                                                                                                                                                                                    |
| <b>MIM</b>             | 600380                                                                                                                                                                                                                                                                                                                                                                                                          |
| <b>UniProt ID</b>      | P55055                                                                                                                                                                                                                                                                                                                                                                                                          |

## SDS-PAGE



Tel: 1-631-559-9269 1-516-512-3133

Email: [info@creative-biomart.com](mailto:info@creative-biomart.com) Fax: 1-631-938-8127

45-1 Ramsey Road, Shirley, NY 11967, USA