

Recombinant Bovine NR1H2 Protein, His-tagged

Cat. No. NR1H2-83B **Lot. No.** (See product label)

SPECIFICATION

Product Overview	Recombinant Bovine NR1H2 Protein, fused to His-tag, was expressed in E. coli.
Species	Bovine
Source	E.coli
Description	The liver X receptors, LXRA (NR1H3; MIM 602423) and LXRβ, form a subfamily of the nuclear receptor superfamily and are key regulators of macrophage function, controlling transcriptional programs involved in lipid homeostasis and inflammation. The inducible LXRA is highly expressed in liver, adrenal gland, intestine, adipose tissue, macrophages, lung, and kidney, whereas LXRβ is ubiquitously expressed.
Form	50mM Hepes, 0.3M NaCl (pH7.0).
Molecular Mass	50.8 kDa
AA Sequence	MHHHHHHSTPTTNSVDTPPLPGNGPSTPSSSPGGKEDGPEPCPGGADPDVPSTDG ADSASVVVILDTAEEPERKRKKGPAKMLGDELQVCGDTASGFHYNVLSCEGCKG FFRRSVIRGGAGRYACRGGGTCQMDAFMRRKCCQCRRLKCKEAGMREQCVLSKE QIRKKKIRKQQQQQQSSPTGPGVSSSSPASGPGASPGGSDGGGQGSGEGEGV QLTAQELMIQQLVAAQLQCNKRSFSDQPKVTPWPLGADPQSRDARQQRFAHFTE LAIISVQEIVDFAKQVPGFLQLGREDQIALLKASTIEIMLLETARRYNHETECITFLKDFT YSKDDFHRAGLQVEFINPIFEFSRAMRRLGLDDAEYALLIAINIFSADRPNVQEPSRVE ALQQPYVDALLSYTRIKRPQDQLRFPRMLMKLVSLRTLSSVHSEQVFALRLQDKKLP PLLSEIWDVHE

 Tel: 1-631-559-9269 1-516-512-3133

 Email: info@creative-biomart.com  Fax: 1-631-938-8127

 45-1 Ramsey Road, Shirley, NY 11967, USA



Purity	>90%
Storage	Store it under sterile conditions at -20 to -80 centigrade. It is recommended that the protein be aliquoted for optimal storage. Avoid repeated freeze-thaw cycles.
Concentration	0.35 mg/ml

GENE INFORMATION

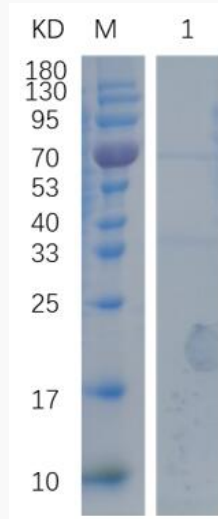
Gene Name	NR1H2 nuclear receptor subfamily 1 group H member 2 [Bos taurus (cattle)]
Official Symbol	NR1H2
Synonyms	NER; UNR; LXRB; LXR-b; NER-I; RIP15
Gene ID	509622
mRNA Refseq	NM_001014883
Protein Refseq	NP_001014883
UniProt ID	Q5BIS6

Tel: 1-631-559-9269 1-516-512-3133

Email: info@creative-biomart.com Fax: 1-631-938-8127

45-1 Ramsey Road, Shirley, NY 11967, USA

SDS-PAGE



Reducing 12% SDS-PAGE analysis profile of purified NR1 (CBB stained).

 Tel: 1-631-559-9269 1-516-512-3133

 Email: info@creative-biomart.com  Fax: 1-631-938-8127

 45-1 Ramsey Road, Shirley, NY 11967, USA