

Recombinant Human NR1H3 Protein, His/SUMO-tagged

Cat. No. NR1H3-1377H Lot. No. (See product label)

SPECIFICATION

Product Overview	Recombinant full length human NR1H3 protein was expressed in E. coli with N-terminal 6XHis-SUMO-tagged.
Species	Human
Source	E.coli
ProteinLength	Met46-Glu387
Description	Nuclear receptor. Interaction with RXR shifts RXR from its role as a silent DNA-binding partner to an active ligand-binding subunit in mediating retinoid responses through target genes defined by LXRES. LXRES are DR4-type response elements characterized by direct repeats of two similar hexanuclotide half-sites spaced by four nucleotides. Plays an important role in the regulation of cholesterol homeostasis, regulating cholesterol uptake through MYLIP-dependent ubiquitination of LDLR, VLDLR and LRP8. Interplays functionally with RORA for the regulation of genes involved in liver metabolism .
Form	Tris-based buffer 50% glycerol
Molecular Mass	61.7kDa
Purity	Greater than 90% as determined by SDS-PAGE.
Storage	The shelf life is related to many factors, storage state, buffer ingredients, storage

 Tel: 1-631-559-9269 1-516-512-3133

 Email: info@creative-biomart.com  Fax: 1-631-938-8127

 45-1 Ramsey Road, Shirley, NY 11967, USA

temperature and the stability of the protein itself. Generally, the shelf life of liquid form is 6 months at -20 centigrade/-80 centigrade. The shelf life of lyophilized form is 12 months at -20 centigrade/-80 centigrade.

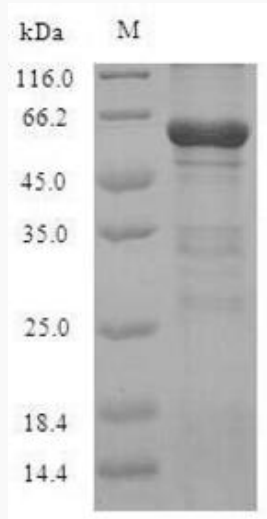
GENE INFORMATION

Gene Name	NR1H3 nuclear receptor subfamily 1, group H, member 3 [Homo sapiens]
Official Symbol	NR1H3
Synonyms	NR1H3; nuclear receptor subfamily 1, group H, member 3; LXRA; LXR-a; RLD-1; OTTHUMP00000198038; liver X receptor alpha; liver X receptor, alpha; liver X receptor-alpha; TLS/CHOP; Nuclear receptor subfamily 1 group H member 3; Nuclear orphan receptor LXR-alpha
Gene ID	10062
mRNA Refseq	NM_001130101
Protein Refseq	NP_001123573
MIM	602423
UniProt ID	Q13133

 Tel: 1-631-559-9269 1-516-512-3133

 Email: info@creative-biomart.com  Fax: 1-631-938-8127

 45-1 Ramsey Road, Shirley, NY 11967, USA



Tel: 1-631-559-9269 1-516-512-3133

Email: info@creative-biomart.com Fax: 1-631-938-8127

45-1 Ramsey Road, Shirley, NY 11967, USA