

Recombinant Human NR2C1 Protein, GST-tagged

Cat. No. NR2C1-6077H Lot. No. (See product label)

SPECIFICATION

Product Overview	Human NR2C1 full-length ORF (NP_001027458.1, 1 a.a. - 467 a.a.) recombinant protein with GST-tag at N-terminal.
Species	Human
Source	Wheat Germ
Description	This gene encodes a nuclear hormone receptor characterized by a highly conserved DNA binding domain (DBD), a variable hinge region, and a carboxy-terminal ligand binding domain (LBD) that is typical for all members of the steroid/thyroid hormone receptor superfamily. This protein also belongs to a large family of ligand-inducible transcription factors that regulate gene expression by binding to specific DNA sequences within promoters of target genes. Multiple alternatively spliced transcript variants have been described, but the full-length nature of some of these variants has not been determined. [provided by RefSeq]
Molecular Mass	77.6 kDa
AA Sequence	MATIEEIAHQIIEQQMGEIVTEQQTGQKIQIVTALDHNTQGKQFILTNHGSTPSKVILA RQDSTPGKVFLTTPDAAGVNQLFFFTTPDLAQHLQLLTDNSPDQGPNKVFDFLCVVC GDKASGRHYGAVTCEGCKGFFKRSIRKNLVYSCRGSKDCIINKHHRNRCQYCRLQR CIAFGMKQDSVQCERKPIEVSREKSSNCAASTEKIYIRKDLRSPLTATPTFVTDSEST RSTGLLDSGMFMNIHPSGVKTESAVLMTSDKAESCQGDLSLANVVTSLANLGKTK DLSQNSNEMSMIESLSNDDTSLCEFQEMQTNGDVSRAFDLAKALNPGESTACQSS

 Tel: 1-631-559-9269 1-516-512-3133

 Email: info@creative-biomart.com  Fax: 1-631-938-8127

 45-1 Ramsey Road, Shirley, NY 11967, USA

VAGMEGSVHLITGDSSINYTEKEGPLLSDSHVAFRLTMPSPMPEYLNVHYIGESASR
 LLFLSMHWALSIPSFQALGQENSISLVKAYWNEFLTGLAQCWQVMNVATILATFVN
 CLHNSLQQAEG

Applications	Enzyme-linked Immunoabsorbent Assay Western Blot (Recombinant protein) Antibody Production Protein Array
Notes	Best use within three months from the date of receipt of this protein.
Storage	Store at -80 centigrade. Aliquot to avoid repeated freezing and thawing.
Storage Buffer	50 mM Tris-HCl, 10 mM reduced Glutathione, pH=8.0 in the elution buffer.

GENE INFORMATION

Gene Name	NR2C1 nuclear receptor subfamily 2, group C, member 1 [Homo sapiens]
Official Symbol	NR2C1
Synonyms	NR2C1; nuclear receptor subfamily 2, group C, member 1; TR2; nuclear receptor subfamily 2 group C member 1; TR2 11; orphan nuclear receptor TR2; TR2 nuclear hormone receptor; nuclear receptor subfamily 2, group C isoform;
Gene ID	7181
mRNA Refseq	NM_001032287
Protein Refseq	NP_001027458

 Tel: 1-631-559-9269 1-516-512-3133

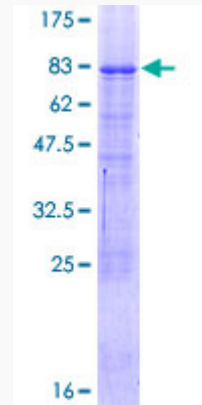
 Email: info@creative-biomart.com  Fax: 1-631-938-8127

 45-1 Ramsey Road, Shirley, NY 11967, USA

MIM 601529

UniProt ID P13056

**Quality Control
Testing:**



12.5% SDS-PAGE Stained with Coomassie Blue.

 Tel: 1-631-559-9269 1-516-512-3133

 Email: info@creative-biomart.com  Fax: 1-631-938-8127

 45-1 Ramsey Road, Shirley, NY 11967, USA