

# Recombinant Full Length Human NR2C2 Protein, C-Flag-tagged

**Cat. No.** NR2C2-1900HFL    **Lot. No.** (See product label)

## SPECIFICATION

<b>Product Overview</b>	Recombinant Full Length Human NR2C2 Protein, fused to Flag-tag at C-terminus, was expressed in Mammalian cells.
<b>Species</b>	Human
<b>Source</b>	Mammalian Cells
<b>Description</b>	This gene encodes a protein that belongs to the nuclear hormone receptor family. Members of this family act as ligand-activated transcription factors and function in many biological processes such as development, cellular differentiation and homeostasis. The activated receptor/ligand complex is translocated to the nucleus where it binds to hormone response elements of target genes. The protein encoded by this gene plays a role in protecting cells from oxidative stress and damage induced by ionizing radiation. The lack of a similar gene in mouse results in growth retardation, severe spinal curvature, subfertility, premature aging, and prostatic intraepithelial neoplasia (PIN) development. Alternative splicing results in multiple transcript variants encoding different isoforms.
<b>Form</b>	25 mM Tris HCl, pH 7.3, 100 mM glycine, 10% glycerol.
<b>Molecular Mass</b>	67.2 kDa
<b>AA Sequence</b>	MTSPSPRIQIISTDSAVASPQRIQGSEPASGPLSVFTSLNKEKIVTDQQTGQKIQIVTAVDASGSPKQQF ILTSPDGAGTGKVLASPETSSAKQLIFTTSDNLVPGRIQIVTDSAS

 Tel: 1-631-559-9269    1-516-512-3133

 Email: [info@creative-biomart.com](mailto:info@creative-biomart.com)     Fax: 1-631-938-8127

 45-1 Ramsey Road, Shirley, NY 11967, USA



VERLLGKTDVQRPQVVEYCVVCG DKASGRHYGAVSCEGCKGFFKRSVRKNLTYS  
 CRSNQDCIINKHHRNRCQFCRLKKCLEMGMKMESVQSER KPFDVQREKPSNCAAS  
 TEKIYIRKDLRSPLIATPTFVADKDGARQTGLLDPGMLVNIQQPLIREDGTVLL ATDSK  
 AETSQGALGTLANVVTSLANLSESLNNGDTSEIQPEDQSASEITRAFDTLAKALNTTD  
 SSSPSL ADGIDTSGGGSIHVISRDQSTPIIEVEGPLLSDTHVTFKLTMPSPMPEYLN  
 VHYICESASRLFLSMHWA RSIPAFQALGQDCNTSLVRACWNEFTLGLAQCAQVM  
 SLSTILAAIVNHLQNSIQEDKLSGDRIKQVMEH IWKLQEFNCNSMAKLDIDGYEYAYLK  
 AIVLFSPDHPGLTSTSQIEKFQEKAQMEQLDYVQKTYSEDYRLA RILVRLPALRLMS  
 SNITEELFFTGLIGNVSIDSIIIPYILKMETAEYNGQITGASL TRTRPLEQKLISEEDLAAN  
 DILDYKDDDDKV

**Purity**

> 80% as determined by SDS-PAGE and Coomassie blue staining.

**Stability**

Stable for 12 months from the date of receipt of the product under proper storage and handling conditions. Avoid repeated freeze-thaw cycles.

**Storage**

Store at -80 centigrade.

**Concentration**

>50 ug/mL as determined by microplate BCA method.

**Preparation**

Recombinant protein was captured through anti-DDK affinity column followed by conventional chromatography steps.

**Protein Families**

Druggable Genome, Nuclear Hormone Receptor, Transcription Factors

**Full Length**

Full L.

**GENE INFORMATION**

**Gene Name**

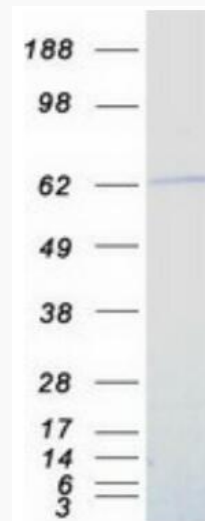
NR2C2 nuclear receptor subfamily 2 group C member 2 [ Homo sapiens (human) ]

Tel: 1-631-559-9269 1-516-512-3133

Email: [info@creative-biomart.com](mailto:info@creative-biomart.com) Fax: 1-631-938-8127

45-1 Ramsey Road, Shirley, NY 11967, USA

Official Symbol	NR2C2
Synonyms	TR4; TAK1
Gene ID	7182
mRNA Refseq	NM_003298.5
Protein Refseq	NP_003289.2
MIM	601426
UniProt ID	P49116



Coomassie blue staining of purified NR2C2 protein.

Tel: 1-631-559-9269 1-516-512-3133

Email: [info@creative-biomart.com](mailto:info@creative-biomart.com) Fax: 1-631-938-8127

45-1 Ramsey Road, Shirley, NY 11967, USA