

Recombinant Human NR2E1 Protein, GST-tagged

Cat. No. NR2E1-6081H Lot. No. (See product label)

SPECIFICATION

Product Overview	Human NR2E1 full-length ORF (NP_003260.1, 1 a.a. - 385 a.a.) recombinant protein with GST-tag at N-terminal.
Species	Human
Source	Wheat Germ
Description	The protein encoded by this gene is an orphan receptor involved in retinal development. The encoded protein also regulates adult neural stem cell proliferation and may be involved in control of aggressive behavior. Two transcript variants encoding different isoforms have been found for this gene. [provided by RefSeq, Aug 2015]
Molecular Mass	69 kDa
AA Sequence	MSKPAGSTSRILDIPCKVCGDRSSGKHYGVYACDGC SGFFKRSIRRNRTYVCKSGN QGGCPVDKTHRNQCACRLKKCLEVNMNKDAVQHERGPRTSTIRKQVALYFRGHK EENGAAAHFPSAALPAPAFFTAVTQLEPHGLELAAVSTTPERQTLVSLAQPTPKYPH EVNGTPMYLYEVATESVCESAARLLFMSIKWAKSVPAFSTLSLQDQLMLLEDARE LFVLGIAQWAIPVDANTLLAVSGMNGDNTDSQKLNKIISEIQALQEVVARFRQLRLDA TEFACKCIVTFKAVPTHSGSELRSFRNAAAIALQDEAQLTLNSYIHTRYPTQPCR FKLLLLLPAALRSISPSTIEEVFFKKTIGNVPITRLLSDMYKSSDI
Applications	Enzyme-linked Immunoabsorbent Assay Western Blot (Recombinant protein)

 Tel: 1-631-559-9269 1-516-512-3133

 Email: info@creative-biomart.com  Fax: 1-631-938-8127

 45-1 Ramsey Road, Shirley, NY 11967, USA

	Antibody Production Protein Array
Notes	Best use within three months from the date of receipt of this protein.
Storage	Store at -80 centigrade. Aliquot to avoid repeated freezing and thawing.
Storage Buffer	50 mM Tris-HCl, 10 mM reduced Glutathione, pH=8.0 in the elution buffer.
GENE INFORMATION	
Gene Name	NR2E1 nuclear receptor subfamily 2, group E, member 1 [Homo sapiens]
Official Symbol	NR2E1
Synonyms	NR2E1; nuclear receptor subfamily 2, group E, member 1; TLX; nuclear receptor subfamily 2 group E member 1; TLL; XTLL; hTII; tailless homolog; nuclear receptor TLX; tailes-related receptor; protein tailless homolog;
Gene ID	7101
mRNA Refseq	NM_003269
Protein Refseq	NP_003260
MIM	603849
UniProt ID	Q9Y466

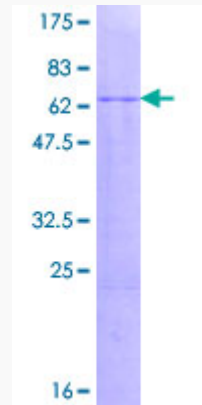
 Tel: 1-631-559-9269 1-516-512-3133

 Email: info@creative-biomart.com  Fax: 1-631-938-8127

 45-1 Ramsey Road, Shirley, NY 11967, USA

Quality Control

Testing:



12.5% SDS-PAGE Stained with Coomassie Blue.

 Tel: 1-631-559-9269 1-516-512-3133

 Email: info@creative-biomart.com  Fax: 1-631-938-8127

 45-1 Ramsey Road, Shirley, NY 11967, USA