

## Recombinant Human NR2E3 Protein, Myc/DDK-tagged, C13 and N15-labeled

Cat. No. NR2E3-1583H Lot. No. (See product label)

### SPECIFICATION

<b>Product Overview</b>	NR2E3 MS Standard C13 and N15-labeled recombinant protein (NP_055064) with a C-terminal MYC/DDK tag, was expressed in HEK293 cells.
<b>Species</b>	Human
<b>Source</b>	HEK293
<b>Description</b>	This protein is part of a large family of nuclear receptor transcription factors involved in signaling pathways. Nuclear receptors have been shown to regulate pathways involved in embryonic development, as well as in maintenance of proper cell function in adults. Members of this family are characterized by discrete domains that function in DNA and ligand binding. This gene encodes a retinal nuclear receptor that is a ligand-dependent transcription factor. Defects in this gene are a cause of enhanced S cone syndrome. Alternatively spliced transcript variants encoding different isoforms have been identified.
<b>Molecular Mass</b>	44.5 kDa
<b>AA Sequence</b>	METRPTALMSSTVAAAAPAAGAASRKESPGRWGLGEDPTGVSPSLQCRVCGDSSS GKHYGIYACNGCSGFFKRSVRRRLIYRCQVGAGMCPVDKAHRNQCQACRLKKCLQ AGMNQDAVQNERQPRSTAQVHLDSESNTERPELVAPPAPAGRSPRGPTPMS AARALGHFMA SLITAETCAKLEPEDADENIDVTSNDPEFPSSPYSSSSPCGLDSIHE TSARLLFMAVKWAKNLPVFSSLPFRDQVILLEEAWSELFLLGAIQWSLPLDSCPLLAP

 Tel: 1-631-559-9269 1-516-512-3133

 Email: [info@creative-biomart.com](mailto:info@creative-biomart.com)  Fax: 1-631-938-8127

 45-1 Ramsey Road, Shirley, NY 11967, USA

PEASAAGGAQGRLTLASMETRVLQETISRFRALAVDPTEFACMKALVLFKPETRGLK  
DPEHVEALQDQSQVMLSQHSKAHHPSPVRFGKLLLLLPSLRFITAERIELLFFRKT  
GNTPMEKLLCDMFKNSGPTRTRRLEQKLISEEDLAANDILDYKDDDDKV

**Purity** > 80% as determined by SDS-PAGE and Coomassie blue staining

**Stability** Stable for 3 months from receipt of products under proper storage and handling conditions.

**Storage** Store at -80 centigrade. Avoid repeated freeze-thaw cycles.

**Concentration** 50 µg/mL as determined by BCA

**Storage Buffer** 100 mM glycine, 25 mM Tris-HCl, pH 7.3.

## GENE INFORMATION

**Gene Name** NR2E3 nuclear receptor subfamily 2 group E member 3 [ Homo sapiens (human) ]

**Official Symbol** NR2E3

**Synonyms** NR2E3; nuclear receptor subfamily 2, group E, member 3; photoreceptor-specific nuclear receptor; PNR; rd7; RP37; retina-specific nuclear receptor; photoreceptor cell-specific nuclear receptor variant 1; RNR; ESCS; MGC49976;

**Gene ID** 10002

**mRNA Refseq** NM\_014249

**Protein Refseq** NP\_055064

 Tel: 1-631-559-9269 1-516-512-3133

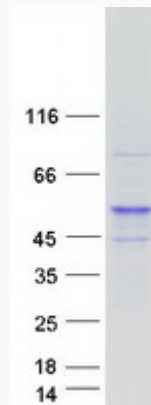
 Email: [info@creative-biomart.com](mailto:info@creative-biomart.com)  Fax: 1-631-938-8127

 45-1 Ramsey Road, Shirley, NY 11967, USA

**MIM** 604485

**UniProt ID** Q9Y5X4

**SDS-PAGE**



 Tel: 1-631-559-9269 1-516-512-3133

 Email: [info@creative-biomart.com](mailto:info@creative-biomart.com)  Fax: 1-631-938-8127

 45-1 Ramsey Road, Shirley, NY 11967, USA