

## Recombinant Human NR2E3 Protein, GST-tagged

Cat. No. NR2E3-6083H Lot. No. (See product label)

### SPECIFICATION

<b>Product Overview</b>	Human NR2E3 full-length ORF ( AAH41421, 1 a.a. - 322 a.a.) recombinant protein with GST-tag at N-terminal.
<b>Species</b>	Human
<b>Source</b>	Wheat Germ
<b>Description</b>	This protein is part of a large family of nuclear receptor transcription factors involved in signaling pathways. Nuclear receptors have been shown to regulate pathways involved in embryonic development, as well as in maintenance of proper cell function in adults. Members of this family are characterized by discrete domains that function in DNA and ligand binding. This gene encodes a retinal nuclear receptor that is a ligand-dependent transcription factor. Defects in this gene are a cause of enhanced S cone syndrome. Alternatively spliced transcript variants encoding different isoforms have been identified. [provided by RefSeq]
<b>Molecular Mass</b>	61.16 kDa
<b>AA Sequence</b>	MCPVDKAHRNQCQACRLKKCLQAGMNQDAVQNERQPRSTAQVHLD SMESNTESR PESLVAPPAPAGRS PRGPTPMSAARALGHFMASLITAETCAKLEPEDADENIDVTS NDPEFPSSPYSSSSPCGLDSIHETSARLLFMVWKWAKNLPVFSSLPFRDQVILLEE WSELFLLGAIQWSLPLDSCPLLAPPEASAAGGAQGRLTLASMETRVLQETISRFRAL AVDPT EFACMKALVLFK PETRGLKDPEHVEALQDQSQVMLSQHSKAHHPSPVRF GKLLLLLPSLRFITAERIELLFFRKTIGNTPMEKLLCDMFKN

 Tel: 1-631-559-9269 1-516-512-3133

 Email: [info@creative-biomart.com](mailto:info@creative-biomart.com)  Fax: 1-631-938-8127

 45-1 Ramsey Road, Shirley, NY 11967, USA



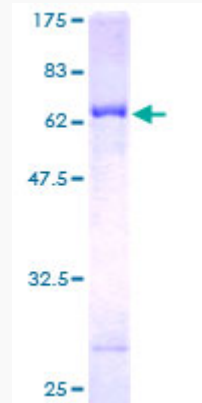
<b>Applications</b>	Enzyme-linked Immunoabsorbent Assay Western Blot (Recombinant protein) Antibody Production Protein Array
<b>Notes</b>	Best use within three months from the date of receipt of this protein.
<b>Storage</b>	Store at -80 centigrade. Aliquot to avoid repeated freezing and thawing.
<b>Storage Buffer</b>	50 mM Tris-HCl, 10 mM reduced Glutathione, pH=8.0 in the elution buffer.

## GENE INFORMATION

<b>Gene Name</b>	NR2E3 nuclear receptor subfamily 2, group E, member 3 [ Homo sapiens ]
<b>Official Symbol</b>	NR2E3
<b>Synonyms</b>	NR2E3; nuclear receptor subfamily 2, group E, member 3; photoreceptor-specific nuclear receptor; PNR; rd7; RP37; retina-specific nuclear receptor; photoreceptor cell-specific nuclear receptor variant 1; RNR; ESCS; MGC49976;
<b>Gene ID</b>	10002
<b>mRNA Refseq</b>	NM_014249
<b>Protein Refseq</b>	NP_055064
<b>MIM</b>	604485
<b>UniProt ID</b>	Q9Y5X4

**Quality Control**

**Testing:**



12.5% SDS-PAGE Stained with Coomassie Blue.

 Tel: 1-631-559-9269 1-516-512-3133

 Email: [info@creative-biomart.com](mailto:info@creative-biomart.com)  Fax: 1-631-938-8127

 45-1 Ramsey Road, Shirley, NY 11967, USA