

## Recombinant Human NR2E3 protein, GST-tagged

Cat. No. NR2E3-7844H Lot. No. (See product label)

### SPECIFICATION

<b>Product Overview</b>	Recombinant Human NR2E3 protein(1-322 aa), fused with N-terminal GST tag, was expressed in E.coli.
<b>Species</b>	Human
<b>Source</b>	E.coli
<b>ProteinLength</b>	1-322 aa
<b>Form</b>	The purified protein was lyophilized from sterile phosphate-buffered saline (PBS: 58 mM Na <sub>2</sub> HPO <sub>4</sub> , 17 mM NaH <sub>2</sub> PO <sub>4</sub> , 68 mM NaCl, pH 8.0). Prior to lyophilization, 5% (w/v) trehalose and 5% (w/v) mannitol were incorporated as cryoprotective excipients.
<b>AASequence</b>	MCPVDKAHRNQCQACRLKKCLQAGMNQDAVQNERQPRSTAQVHLDSMESNTESR PESLVAPPAPAGRSPRGPTPMSAARALGHHFMASLITAETCAKLEPEDADENIDVTS NDPEFPSSPYSSSSPCGLDSIHETSARLLFMAVKWAKNLPVFSSLPFRDQVILLEE WSELFLLGAIQWSLPLDSCPLLAPPEASAAGGAQGRLTLASMETRVLQETISRFRAL AVDPTTEFACMKALVLFKPESTRGLKDPEHVEALQDQSQVMLSQHSKAHHPSQPVR FKLLLLLPSLRFITAERIELLFFRKTIGNTPMEKLLCDMFKN
<b>Purity</b>	85%, by SDS-PAGE with Coomassie Brilliant Blue staining.
<b>Storage</b>	Store at 2-8°C for 1-2 weeks. Aliquot and store at -20°C to -80°C for up to 3 months, reconstitution with sterile water and addition of an equal volume of glycerol. Avoid

 Tel: 1-631-559-9269 1-516-512-3133

 Email: [info@creative-biomart.com](mailto:info@creative-biomart.com)  Fax: 1-631-938-8127

 45-1 Ramsey Road, Shirley, NY 11967, USA

repeat freeze-thaw cycles.

**Reconstitution**

Dissolve the product in 200 µl sterile water to achieve a working concentration of 0.25 g/µl. If experimental compatibility allows, mix the aqueous solution with an equal volume of glycerol (1:1 ratio) after initial reconstitution.

**GENE INFORMATION****Gene Name**

NR2E3 nuclear receptor subfamily 2, group E, member 3 [ Homo sapiens ]

**Official Symbol**

NR2E3

**Synonyms**

NR2E3; nuclear receptor subfamily 2, group E, member 3; photoreceptor-specific nuclear receptor; PNR; rd7; RP37; retina-specific nuclear receptor; photoreceptor cell-specific nuclear receptor variant 1; RNR; ESCS; MGC49976;

**Gene ID**

10002

**mRNA Refseq**

NM\_014249

**Protein Refseq**

NP\_055064

**MIM**

604485

**UniProt ID**

Q9Y5X4

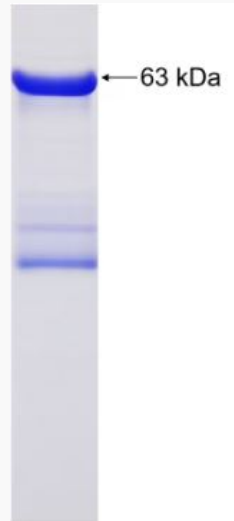
 Tel: 1-631-559-9269 1-516-512-3133

 Email: [info@creative-biomart.com](mailto:info@creative-biomart.com)  Fax: 1-631-938-8127

 45-1 Ramsey Road, Shirley, NY 11967, USA



SDS-PAGE



Tel: 1-631-559-9269 1-516-512-3133

Email: [info@creative-biomart.com](mailto:info@creative-biomart.com) Fax: 1-631-938-8127

45-1 Ramsey Road, Shirley, NY 11967, USA