

Recombinant Human NR2E3 protein, His-tagged

Cat. No. NR2E3-7845H Lot. No. (See product label)

SPECIFICATION

Product Overview	Recombinant Human NR2E3 protein(1-138 aa), fused with N-terminal His tag, was expressed in E.coli.
Species	Human
Source	E.coli
ProteinLength	1-138 aa
Form	The purified protein was lyophilized from sterile phosphate-buffered saline (PBS: 58 mM Na ₂ HPO ₄ , 17 mM NaH ₂ PO ₄ , 68 mM NaCl, pH 7.4). Prior to lyophilization, 5% (w/v) trehalose and 5% (w/v) mannitol were incorporated as cryoprotective excipients.
AASequence	MCPVDKAHRNQCQACRLKKCLQAGMNQDAVQNERQPRSTAQVHLDSMESNTESR PESLVAPPAPAGRSRGPMPMSAARALGHHFMASLITAETCAKLEPEDADENIDVTS NDPEFPSSPYSSSSPCGLDSIHETSAR
Purity	85%, by SDS-PAGE with Coomassie Brilliant Blue staining.
Storage	Store at 2-8°C for 1-2 weeks. Aliquot and store at -20°C to -80°C for up to 3 months, reconstitution with sterile water and addition of an equal volume of glycerol. Avoid repeat freeze-thaw cycles.
Reconstitution	Dissolve the product in 200 µl sterile water to achieve a working concentration of 0.25

 Tel: 1-631-559-9269 1-516-512-3133

 Email: info@creative-biomart.com  Fax: 1-631-938-8127

 45-1 Ramsey Road, Shirley, NY 11967, USA

g/μl. If experimental compatibility allows, mix the aqueous solution with an equal volume of glycerol (1:1 ratio) after initial reconstitution.

GENE INFORMATION

Gene Name	NR2E3 nuclear receptor subfamily 2, group E, member 3 [Homo sapiens]
Official Symbol	NR2E3
Synonyms	NR2E3; nuclear receptor subfamily 2, group E, member 3; photoreceptor-specific nuclear receptor; PNR; rd7; RP37; retina-specific nuclear receptor; photoreceptor cell-specific nuclear receptor variant 1; RNR; ESCS; MGC49976;
Gene ID	10002
mRNA Refseq	NM_014249
Protein Refseq	NP_055064
MIM	604485
UniProt ID	Q9Y5X4

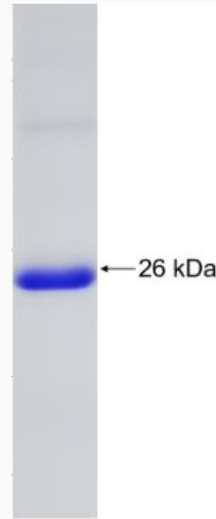
 Tel: 1-631-559-9269 1-516-512-3133

 Email: info@creative-biomart.com  Fax: 1-631-938-8127

 45-1 Ramsey Road, Shirley, NY 11967, USA



SDS-PAGE



Tel: 1-631-559-9269 1-516-512-3133

Email: info@creative-biomart.com Fax: 1-631-938-8127

45-1 Ramsey Road, Shirley, NY 11967, USA