

Recombinant Full Length Human NR2F1 Protein, C-Flag-tagged

Cat. No. NR2F1-1413HFL Lot. No. (See product label)

SPECIFICATION

Product Overview	Recombinant Full Length Human NR2F1 Protein, fused to Flag-tag at C-terminus, was expressed in Mammalian cells.
Species	Human
Source	Mammalian Cells
Description	The protein encoded by this gene is a nuclear hormone receptor and transcriptional regulator. The encoded protein acts as a homodimer and binds to 5'-AGGTCA-3' repeats. Defects in this gene are a cause of Bosch-Boonstra optic atrophy syndrome (BBOAS).
Form	25 mM Tris HCl, pH 7.3, 100 mM glycine, 10% glycerol.
Molecular Mass	46 kDa
AA Sequence	MAMVVSSWRDPQDDVAGGNPGGPNPAAQAARGGGGGAGEQQQQAGSGAPHTP QTPGQPGAPATPGTAGDK GQGPPGSGQSQQHIECVVCGDKSSGKHYGQFTCEG CKSFFKRSVRRNLTYTCRANRNCPIDQHHRNQCQY CRLKKCLKVGMRRREAVQRG RMPPTQPNPGQYALTNGDPLNGHCYLSGYISLLLRAEPTYPSRYGSQCMQP NNIM GIENICELAAARLLFSAVEWARNIPFFPDLQITDQVSLLRLLTWSELFVLNAAQCSMP LHVAPLLAAA GLHASPMSADRVVAFMDHIRIFQEVEKLKALHVDSAEYSCLKAIVLFTS DACGLSDAAHIESLQEKSQC ALEEVRSQYPNQPSRFGKLLLRPLSLRTVSSSVIEQ LFFVRLVGKTIETLIRDMLLSGSSFNWPYMSI

 Tel: 1-631-559-9269 1-516-512-3133

 Email: info@creative-biomart.com  Fax: 1-631-938-8127

 45-1 Ramsey Road, Shirley, NY 11967, USA

QCSTRTRPLEQKLISEEDLAANDILDYKDDDDKV

Purity > 80% as determined by SDS-PAGE and Coomassie blue staining.

Stability Stable for 12 months from the date of receipt of the product under proper storage and handling conditions. Avoid repeated freeze-thaw cycles.

Storage Store at -80 centigrade.

Concentration >50 ug/mL as determined by microplate BCA method.

Preparation Recombinant protein was captured through anti-DDK affinity column followed by conventional chromatography steps.

Protein Families Druggable Genome, Nuclear Hormone Receptor, Transcription Factors

Full Length Full L.

GENE INFORMATION

Gene Name [NR2F1 nuclear receptor subfamily 2 group F member 1 \[Homo sapiens \(human\) \]](#)

Official Symbol [NR2F1](#)

Synonyms EAR3; BBOAS; EAR-3; SVP44; BBSOAS; ERBAL3; COUPTF1; TFCOUP1; COUP-TFI; TCFCOUP1

Gene ID [7025](#)

mRNA Refseq [NM_005654.6](#)

 Tel: 1-631-559-9269 1-516-512-3133

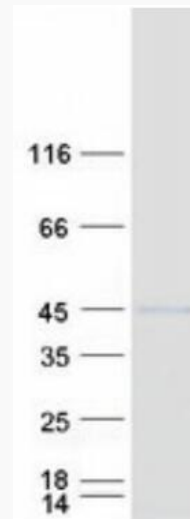
 Email: info@creative-biomart.com  Fax: 1-631-938-8127

 45-1 Ramsey Road, Shirley, NY 11967, USA

Protein Refseq NP_005645.1

MIM 132890

UniProt ID P10589



Coomassie blue staining of purified NR2F1 protein.

 Tel: 1-631-559-9269 1-516-512-3133

 Email: info@creative-biomart.com  Fax: 1-631-938-8127

 45-1 Ramsey Road, Shirley, NY 11967, USA