

Recombinant Human NR3C1 protein, His-SUMO-tagged

Cat. No. NR3C1-4633H Lot. No. (See product label)

SPECIFICATION

Product Overview	Recombinant Human NR3C1 protein(P04150)(521-777aa), fused with N-terminal His and SUMO tag, was expressed in E.coli.
Species	Human
Source	E.coli
ProteinLength	521-777a.a.
Tag	His&SUMO
Form	If the delivery form is liquid, the default storage buffer is Tris/PBS-based buffer, 5%-50% glycerol. If the delivery form is lyophilized powder, the buffer before lyophilization is Tris/PBS-based buffer, 6% Trehalose, pH 8.0.
Molecular Mass	42.8 kDa
Purity	Greater than 90% as determined by SDS-PAGE.
Storage	Store at -20°C/-80°C upon receipt, aliquoting is necessary for mutiple use. Avoid repeated freeze-thaw cycles.
Reconstitution	We recommend that this vial be briefly centrifuged prior to opening to bring the contents to the bottom. Please reconstitute protein in deionized sterile water to a concentration of 0.1-1.0 mg/mL.We recommend to add 5-50% of glycerol (final

 Tel: 1-631-559-9269 1-516-512-3133

 Email: info@creative-biomart.com  Fax: 1-631-938-8127

 45-1 Ramsey Road, Shirley, NY 11967, USA

concentration) and aliquot for long-term storage at -20°C/-80°C.

AA Sequence

VPATLPQLTPTLVSLLEVIEPEVLYAGYDSSVPDSTWRIMTTLNMLGGRQVIAAVKWA
 KAIPGFRNLHLDQMTLLQYSWMFLMAFALGWRSYRQSSANLLCFAPDLIINEQRM
 TLPCMYDQCKHMLYVSSSELHRLQVSYEEYLCMKTLLLLSSVPKDGLKSQELFDEIRM
 TYIKELGKAIVKREGNSSQNWQRFYQLTKLLDSMHEVVENLLNYCFQTFLDKTMSIE
 FPEMLAEIITNQIPKYSNGNIKKLLFHQK

GENE INFORMATION

Gene Name [NR3C1 nuclear receptor subfamily 3, group C, member 1 \(glucocorticoid receptor\) \[Homo sapiens \]](#)

Official Symbol [NR3C1](#)

Synonyms NR3C1; nuclear receptor subfamily 3, group C, member 1 (glucocorticoid receptor); GRL, nuclear receptor subfamily 3, group C, member 1; glucocorticoid receptor; GR; glucocorticoid nuclear receptor variant 1; GCR; GRL; GCCR;

Gene ID [2908](#)

mRNA Refseq [NM_000176](#)

Protein Refseq [NP_000167](#)

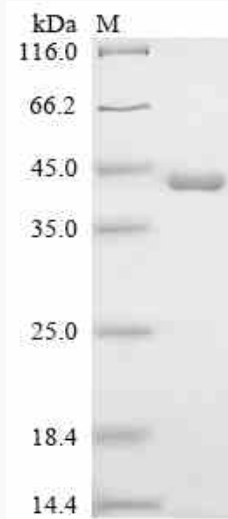
UniProt ID [P04150](#)

 Tel: 1-631-559-9269 1-516-512-3133

 Email: info@creative-biomart.com  Fax: 1-631-938-8127

 45-1 Ramsey Road, Shirley, NY 11967, USA

SDS-PAGE



 Tel: 1-631-559-9269 1-516-512-3133

 Email: info@creative-biomart.com  Fax: 1-631-938-8127

 45-1 Ramsey Road, Shirley, NY 11967, USA