

Recombinant Human NR3C2 Protein, GST-tagged

Cat. No. NR3C2-6092H Lot. No. (See product label)

SPECIFICATION

Product Overview	Human NR3C2 partial ORF (NP_000892, 1 a.a. - 110 a.a.) recombinant protein with GST-tag at N-terminal.
Species	Human
Source	Wheat Germ
Description	This gene encodes the mineralocorticoid receptor, which mediates aldosterone actions on salt and water balance within restricted target cells. The protein functions as a ligand-dependent transcription factor that binds to mineralocorticoid response elements in order to transactivate target genes. Mutations in this gene cause autosomal dominant pseudohypoaldosteronism type I, a disorder characterized by urinary salt wasting. Defects in this gene are also associated with early onset hypertension with severe exacerbation in pregnancy. Alternative splicing results in multiple transcript variants. [provided by RefSeq, Oct 2009]
Molecular Mass	37.84 kDa
AA Sequence	METKGYHSLPEGLDMERRWGQVSQAVERSSSLGPTERTDENNYMEIVNVSCVSGAI PNNSTQGSSKEKQELLPCLQQDNNRPGILTSDIKTELESKELSATVAESMGLYMD
Applications	Enzyme-linked Immunoabsorbent Assay Western Blot (Recombinant protein) Antibody Production Protein Array

 Tel: 1-631-559-9269 1-516-512-3133

 Email: info@creative-biomart.com  Fax: 1-631-938-8127

 45-1 Ramsey Road, Shirley, NY 11967, USA

Notes	Best use within three months from the date of receipt of this protein.
Storage	Store at -80 centigrade. Aliquot to avoid repeated freezing and thawing.
Storage Buffer	50 mM Tris-HCl, 10 mM reduced Glutathione, pH=8.0 in the elution buffer.

GENE INFORMATION

Gene Name	NR3C2 nuclear receptor subfamily 3, group C, member 2 [Homo sapiens]
Official Symbol	NR3C2
Synonyms	NR3C2; nuclear receptor subfamily 3, group C, member 2; MLR; mineralocorticoid receptor; MR; aldosterone receptor; mineralocorticoid receptor 1; mineralocorticoid receptor delta; MCR; NR3C2VIT; FLJ41052; MGC133092;
Gene ID	4306
mRNA Refseq	NM_000901
Protein Refseq	NP_000892
MIM	600983
UniProt ID	P08235

 Tel: 1-631-559-9269 1-516-512-3133

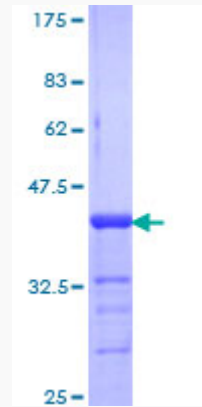
 Email: info@creative-biomart.com  Fax: 1-631-938-8127

 45-1 Ramsey Road, Shirley, NY 11967, USA



Quality Control

Testing:



12.5% SDS-PAGE Stained with Coomassie Blue.

Tel: 1-631-559-9269 1-516-512-3133

Email: info@creative-biomart.com Fax: 1-631-938-8127

45-1 Ramsey Road, Shirley, NY 11967, USA