

## Recombinant Human NR6A1 Protein, GST-tagged

Cat. No. NR6A1-6102H Lot. No. (See product label)

### SPECIFICATION

<b>Product Overview</b>	Human NR6A1 full-length ORF ( NP_001480.3, 1 a.a. - 475 a.a.) recombinant protein with GST-tag at N-terminal.
<b>Species</b>	Human
<b>Source</b>	Wheat Germ
<b>Description</b>	This gene encodes an orphan nuclear receptor which is a member of the nuclear hormone receptor family. Its expression pattern suggests that it may be involved in neurogenesis and germ cell development. The protein can homodimerize and bind DNA, but in vivo targets have not been identified. The gene expresses at least alternatively spliced transcript variants. [provided by RefSeq]
<b>Molecular Mass</b>	80.3 kDa
<b>AA Sequence</b>	MERDEPPPSGGGGGGGSAGFLEPPAALPPPPRNGFCQDELAELDPGTNDRAEQR TCLICGDRATGLHYGIISCEGCKGFFKRSICNKR VYRCSRDKNCVMSRKQRNRCQY CRLKCLQMGMNRKAIRE DGMPGGRNKSIGPVQISEEEIERIMSGQEFEEEAHWS NHGSDSHSSPGNRASESNQPSPGSTLSSRSVELNGFMAFREQYMGMSVPPHYQYI PHLFSYSYGHSPLLPQQARSLDPQSYSLIHQLLSAEDLEPLGTPMLIEDGYAVTQAELE ALLCRLADELLFRQIAWIKKLPFFCELSIKDYTCLLSSTWQELILLSLTVYSKQIFGEL ADV TAKYSPSDEELHRFSDEGMEVIERLIYLYHKFHQLKVSNEEYACMKAINFLNQDI RGLTSASQLEQLNKRYWYICQDFTEYKYTHQPNRFPDLMMCLPEIRYIAGKMVNVPL EQLPLLFKVVLHSCKTSVGKE

Tel: 1-631-559-9269 1-516-512-3133

Email: [info@creative-biomart.com](mailto:info@creative-biomart.com) Fax: 1-631-938-8127

45-1 Ramsey Road, Shirley, NY 11967, USA



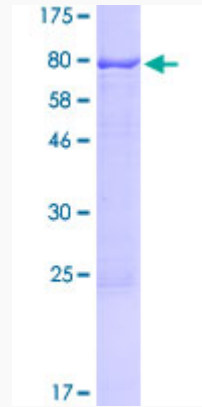
<b>Applications</b>	Enzyme-linked Immunoabsorbent Assay Western Blot (Recombinant protein) Antibody Production Protein Array
<b>Notes</b>	Best use within three months from the date of receipt of this protein.
<b>Storage</b>	Store at -80 centigrade. Aliquot to avoid repeated freezing and thawing.
<b>Storage Buffer</b>	50 mM Tris-HCl, 10 mM reduced Glutathione, pH=8.0 in the elution buffer.

## GENE INFORMATION

<b>Gene Name</b>	nr6a1 nuclear receptor subfamily 6, group A, member 1 [ <i>Xenopus laevis</i> ]
<b>Official Symbol</b>	NR6A1
<b>Synonyms</b>	NR6A1; nuclear receptor subfamily 6, group A, member 1; nuclear receptor subfamily 6 group A member 1; xGCNF; germ cell nuclear factor; gcnf;
<b>Gene ID</b>	399304
<b>mRNA Refseq</b>	NM_001090633
<b>Protein Refseq</b>	NP_001084102

**Quality Control**

**Testing:**



12.5% SDS-PAGE Stained with Coomassie Blue.

 Tel: 1-631-559-9269 1-516-512-3133

 Email: [info@creative-biomart.com](mailto:info@creative-biomart.com)  Fax: 1-631-938-8127

 45-1 Ramsey Road, Shirley, NY 11967, USA