

Recombinant Full Length Human NRAS Protein, C-Flag-tagged

Cat. No. NRAS-172HFL **Lot. No.** (See product label)

SPECIFICATION

Product Overview Recombinant Full Length Human NRAS Protein, fused to Flag-tag at C-terminus, was expressed in Mammalian cells.

Species Human


Source Mammalian Cells

Description This is an N-ras oncogene encoding a membrane protein that shuttles between the Golgi apparatus and the plasma membrane. This shuttling is regulated through palmitoylation and depalmitoylation by the ZDHHC9-GOLGA7 complex. The encoded protein, which has intrinsic GTPase activity, is activated by a guanine nucleotide-exchange factor and inactivated by a GTPase activating protein. Mutations in this gene have been associated with somatic rectal cancer, follicular thyroid cancer, autoimmune lymphoproliferative syndrome, Noonan syndrome, and juvenile myelomonocytic leukemia.


Form 25 mM Tris HCl, pH 7.3, 100 mM glycine, 10% glycerol.

Molecular Mass 21 kDa

AA Sequence MTEYKLVVVGAGGVGKSALTIQLIQNHFVDEYDPTIEDSYRKQVVIDGETCLLDILDTA
 GQEEYSAMRDQ YMRTGEGFLCVFAINNSKSFADINLYREQIKRVKDSDDVPMVLVG
 NKCDLPTRTVDTKQAH ELAKSYGIP
 FIETSAKTRQGVEDAFYTLVREIRQYRMKKNSSDDGTQGCMGLPCVVMTRTRPLE
 QKLISEEDLAANDILDYKDDDDKV

 Tel: 1-631-559-9269 1-516-512-3133

 Email: info@creative-biomart.com  Fax: 1-631-938-8127

 45-1 Ramsey Road, Shirley, NY 11967, USA

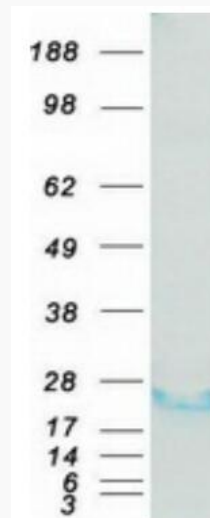
Purity	> 80% as determined by SDS-PAGE and Coomassie blue staining.
Stability	Stable for 12 months from the date of receipt of the product under proper storage and handling conditions. Avoid repeated freeze-thaw cycles.
Storage	Store at -80 centigrade.
Concentration	>50 ug/mL as determined by microplate BCA method.
Preparation	Recombinant protein was captured through anti-DDK affinity column followed by conventional chromatography steps.
Protein Families	Druggable Genome
Protein Pathways	Acute myeloid leukemia, Axon guidance, B cell receptor signaling pathway, Bladder cancer, Chemokine signaling pathway, Chronic myeloid leukemia, Endometrial cancer, ErbB signaling pathway, Fc epsilon RI signaling pathway, Gap junction, Glioma, GnRH signaling pathway, Insulin signaling pathway, Long-term depression, Long-term potentiation, MAPK signaling pathway, Melanogenesis, Melanoma, Natural killer cell mediated cytotoxicity, Neurotrophin signaling pathway, Non-small cell lung cancer, Pathways in cancer, Prostate cancer, Regulation of actin cytoskeleton, Renal cell carcinoma, T cell receptor signaling pathway, Thyroid cancer, Tight junction, VEGF signaling pathway
Full Length	Full L.
GENE INFORMATION	
Gene Name	NRAS NRAS proto-oncogene, GTPase [Homo sapiens (human)]
Official Symbol	NRAS

 Tel: 1-631-559-9269 1-516-512-3133


 Email: info@creative-biomart.com  Fax: 1-631-938-8127

 45-1 Ramsey Road, Shirley, NY 11967, USA


Synonyms	NS6; CMNS; KRAS; NCMS; ALPS4; N-ras; NRAS1
Gene ID	4893
mRNA Refseq	NM_002524.5
Protein Refseq	NP_002515.1
MIM	164790
UniProt ID	P01111



Coomassie blue staining of purified NRAS protein.

 Tel: 1-631-559-9269 1-516-512-3133

 Email: info@creative-biomart.com  Fax: 1-631-938-8127

 45-1 Ramsey Road, Shirley, NY 11967, USA