

Recombinant Human NRBF2 Protein, GST-tagged

Cat. No. NRBF2-6108H Lot. No. (See product label)

SPECIFICATION

Product Overview	Human NRBF2 full-length ORF (AAH11707, 1 a.a. - 287 a.a.) recombinant protein with GST-tag at N-terminal.
Species	Human
Source	Wheat Germ
Description	NRBF2 (Nuclear Receptor Binding Factor 2) is a Protein Coding gene. Among its related pathways are Gene Expression and Nuclear Receptor transcription pathway.
Molecular Mass	57.31 kDa
AA Sequence	MEVMEGPLNLAHQQSRRADRLAAGKYEEAISCHKKAAAYLSEAMKLTQSEQAHL LLELRDSDHMKQLLIQERWKRAQREERLKAQQNTDKDAAHLQTSHKPSAEDAEG QSPLSQKYPSTEKCLPEIQGIFDRDPDPTLLYLLQKSEPAEPCIGSKAPKDDKTIIEE QATKIADLKRHVEFLVAENERLRKENKQLKAEKARLLKGPIAKEPDVDADFDVETSEL WSLPPHAETATASSTWQKFAANTGKAKDIPINLPLDFPSPPELPLMELSEDILKGF NN
Applications	Enzyme-linked Immunoabsorbent Assay Western Blot (Recombinant protein) Antibody Production Protein Array
Notes	Best use within three months from the date of receipt of this protein.

 Tel: 1-631-559-9269 1-516-512-3133

 Email: info@creative-biomart.com  Fax: 1-631-938-8127

 45-1 Ramsey Road, Shirley, NY 11967, USA

Storage Store at -80 centigrade. Aliquot to avoid repeated freezing and thawing.

Storage Buffer 50 mM Tris-HCl, 10 mM reduced Glutathione, pH=8.0 in the elution buffer.

GENE INFORMATION

Gene Name NRBF2 nuclear receptor binding factor 2 [Homo sapiens]

Official Symbol NRBF2

Synonyms NRBF2; nuclear receptor binding factor 2; nuclear receptor-binding factor 2; COPR1; COPR2; DKFZp564C1664; FLJ30395; comodulator of PPAR and RXR; nuclear receptor binding factor-2; NRBF-2;

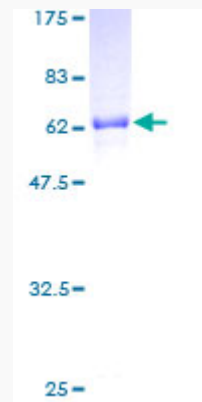
Gene ID 29982

mRNA Refseq NM_030759

Protein Refseq NP_110386

UniProt ID Q96F24

Quality Control Testing:



Tel: 1-631-559-9269 1-516-512-3133

Email: info@creative-biomart.com Fax: 1-631-938-8127

45-1 Ramsey Road, Shirley, NY 11967, USA



12.5% SDS-PAGE Stained with Coomassie Blue.

 Tel: 1-631-559-9269 1-516-512-3133

 Email: info@creative-biomart.com  Fax: 1-631-938-8127

 45-1 Ramsey Road, Shirley, NY 11967, USA