

Recombinant Human NRBP2 Protein, GST-tagged

Cat. No. NRBP2-6111H Lot. No. (See product label)

SPECIFICATION

Product Overview	Human NRBP2 full-length ORF (NP_848659.1, 1 a.a. - 258 a.a.) recombinant protein with GST-tag at N-terminal.
Species	Human
Source	Wheat Germ
Description	NRBP2 (Nuclear Receptor Binding Protein 2) is a Protein Coding gene. GO annotations related to this gene include transferase activity, transferring phosphorus-containing groups and protein tyrosine kinase activity. An important paralog of this gene is NRBP1.
Molecular Mass	56.3 kDa
AA Sequence	MCALAMAVLEIQTNGDTRVTEEAIRARHSLSDPNMREFILCCLARDPARRPSAHSLLFHRVLFVHSLKLLAAHCFIQHQYLPENVVVEEKTAMDLHAVLAELPRPRRPPLQWRYSEVSFMELDKFLEDVRNGIYPLMNFATRPLGLPRVLAPPPEEVQKAKTPTPEPFDSETRKVIQMQCNLERSEDKARWHLTLVVLEDRLHRQLTYDLLPTDSAQDLASELVHYGFLHEDDRMKLAAFLESTFLKYRGTQA
Applications	Enzyme-linked Immunoabsorbent Assay Western Blot (Recombinant protein) Antibody Production Protein Array

 Tel: 1-631-559-9269 1-516-512-3133

 Email: info@creative-biomart.com  Fax: 1-631-938-8127

 45-1 Ramsey Road, Shirley, NY 11967, USA

Notes	Best use within three months from the date of receipt of this protein.
Storage	Store at -80 centigrade. Aliquot to avoid repeated freezing and thawing.
Storage Buffer	50 mM Tris-HCl, 10 mM reduced Glutathione, pH=8.0 in the elution buffer.

GENE INFORMATION

Gene Name	NRBP2 nuclear receptor binding protein 2 [Homo sapiens]
Official Symbol	NRBP2
Synonyms	NRBP2; nuclear receptor binding protein 2; nuclear receptor-binding protein 2; DKFZp434P086; transformation-related protein 16; TRG16; pp9320; MGC138699;
Gene ID	340371
mRNA Refseq	NM_178564
Protein Refseq	NP_848659
UniProt ID	Q9NSY0

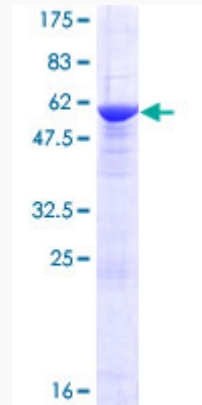
 Tel: 1-631-559-9269 1-516-512-3133

 Email: info@creative-biomart.com  Fax: 1-631-938-8127

 45-1 Ramsey Road, Shirley, NY 11967, USA

Quality Control

Testing:



12.5% SDS-PAGE Stained with Coomassie Blue.

 Tel: 1-631-559-9269 1-516-512-3133

 Email: info@creative-biomart.com  Fax: 1-631-938-8127

 45-1 Ramsey Road, Shirley, NY 11967, USA