

# Recombinant Human NRG1 Protein (Met1-Lys246), N-His tagged

Cat. No. NRG1-4239H Lot. No. (See product label)

## SPECIFICATION

<b>Product Overview</b>	Recombinant human NRG1 (Met1-Lys246) fused with the N-terminal His tag was expressed in E. coli.
<b>Species</b>	Human
<b>Source</b>	E.coli
<b>ProteinLength</b>	Met1-Lys246
<b>Form</b>	Lyophilized powder/frozen liquid
<b>Molecular Mass</b>	27.06 kDa
<b>Purity</b>	>90% as determined by SDS-PAGE.
<b>Notes</b>	For research use only.
<b>Storage</b>	Use a manual defrost freezer and avoid repeated freeze thaw cycles. Store at 2 to 8 centigrade for one week. Store at -20 to -80 centigrade for twelve months from the date of receipt.
<b>Storage Buffer</b>	Supplied as solution form in PBS or lyophilized from PBS.
<b>Reconstitution</b>	Reconstitute in sterile water for a stock solution.

 Tel: 1-631-559-9269 1-516-512-3133

 Email: [info@creative-biomart.com](mailto:info@creative-biomart.com)  Fax: 1-631-938-8127

 45-1 Ramsey Road, Shirley, NY 11967, USA

**Shipping** They are shipped out with dry ice/blue ice unless customers require otherwise.

## GENE INFORMATION

**Gene Name** [NRG1 neuregulin 1 \[ Homo sapiens \(human\) \]](#)

**Official Symbol** [NRG1](#)

**Synonyms** NRG1; neuregulin 1; HGL; pro-neuregulin-1, membrane-bound isoform; GGF; HRG; NDF; MSTP131; pro-NRG1; glial growth factor; neu differentiation factor; neuregulin 1 type IV beta 3; neuregulin 1 type IV beta 1a; sensory and motor neuron derived factor; heregulin, alpha (45kD, ERBB2 p185-activator); ARIA; GGF2; HRG1; HRGA; SMDF; MST131;

**Gene ID** [3084](#)

**mRNA Refseq** [NM\\_001159995](#)

**Protein Refseq** [NP\\_001153467](#)

**MIM** [142445](#)

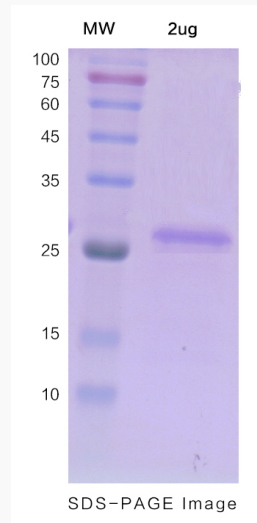
**UniProt ID** [Q02297](#)

 Tel: 1-631-559-9269 1-516-512-3133

 Email: [info@creative-biomart.com](mailto:info@creative-biomart.com)  Fax: 1-631-938-8127

 45-1 Ramsey Road, Shirley, NY 11967, USA

**SDS-PAGE**



 Tel: 1-631-559-9269 1-516-512-3133

 Email: [info@creative-biomart.com](mailto:info@creative-biomart.com)  Fax: 1-631-938-8127

 45-1 Ramsey Road, Shirley, NY 11967, USA