

## Recombinant Human NRK protein, GST-tagged

Cat. No. NRK-15H Lot. No. (See product label)

### SPECIFICATION

<b>Product Overview</b>	Recombinant Human NRK(1483 a.a. - 1582 a.a.) fused with GST tag at N-terminal was expressed in Wheat Germ.
<b>Species</b>	Human
<b>Source</b>	Wheat Germ
<b>ProteinLength</b>	1483-1582 a.a.
<b>Description</b>	The mouse ortholog of this gene encodes a protein kinase required for JNK activation. The encoded protein may be involved in the induction of actin polymerization in late embryogenesis.
<b>Form</b>	50 mM Tris-HCl, 10 mM reduced Glutathione, pH=8.0 in the elution buffer.
<b>Molecular Mass</b>	36.63 kDa
<b>AA Sequence</b>	VEANEQLFKKILEMWKIDIPSSIAFECTQRTTGWGQKAIEVRSLSQSRVLESELKRRSIK KLRFLCTRGDKLFSTSTLRNHHSRVYFMTLGKLEELQSNDV
<b>Applications</b>	Enzyme-linked Immunoabsorbent Assay; Western Blot (Recombinant protein); Antibody Production; Protein Array
<b>Notes</b>	Best use within three months from the date of receipt of this protein.

 Tel: 1-631-559-9269 1-516-512-3133

 Email: [info@creative-biomart.com](mailto:info@creative-biomart.com)  Fax: 1-631-938-8127

 45-1 Ramsey Road, Shirley, NY 11967, USA

**Storage** Store at -80 centigrade. Aliquot to avoid repeated freezing and thawing.

## GENE INFORMATION

**Gene Name** NRK Nik related kinase [ Homo sapiens ]

**Official Symbol** NRK

**Synonyms** NRK; Nik related kinase; nik-related protein kinase; DKFZp686A17109; NESK; FLJ16788; MGC131849;

**Gene ID** 203447

**mRNA Refseq** NM\_198465

**Protein Refseq** NP\_940867

**MIM** 300791

**UniProt ID** Q7Z2Y5

**Chromosome Location** Xq22.3

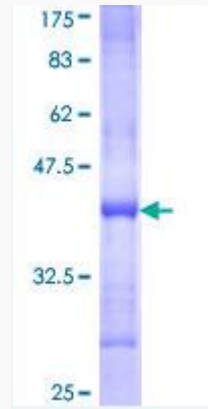
**Pathway** TNF receptor signaling pathway, organism-specific biosystem;

**Function** ATP binding; nucleotide binding; protein serine/threonine kinase activity; small GTPase regulator activity;

 Tel: 1-631-559-9269 1-516-512-3133

 Email: [info@creative-biomart.com](mailto:info@creative-biomart.com)  Fax: 1-631-938-8127

 45-1 Ramsey Road, Shirley, NY 11967, USA



 Tel: 1-631-559-9269 1-516-512-3133

 Email: [info@creative-biomart.com](mailto:info@creative-biomart.com)  Fax: 1-631-938-8127

 45-1 Ramsey Road, Shirley, NY 11967, USA