

Recombinant Human NRP1 protein, Fc-tagged

Cat. No. NRP1-3346H Lot. No. (See product label)

SPECIFICATION

Product Overview	Recombinant Human NRP1 protein(NP_001019799.1) (Met 1-Lys 644) was expressed in Human Cells with the Fc region of human IgG1 at the C-terminus.
Species	Human
Source	Human Cells
ProteinLength	1-644 aa
Form	Lyophilized from sterile PBS, pH 7.4.
Bio-activity	Measured by its ability to bind with recombinant human VEGF165 in a functional ELISA.
Molecular Mass	The recombinant human NRP1/Fc chimera is a disulfide-linked homodimeric protein. The reduced monomer consists of 861 amino acids and has a calculated molecular mass of 96.5 kDa. As a result of glycosylation, rh NRP1/Fc monomer migrates as an approximately 120-125 kDa protein in SDS-PAGE under reducing conditions.
Endotoxin	< 1.0 EU per µg of the protein as determined by the LAL method.
Purity	> 85 % as determined by SDS-PAGE and SEC-HPLC Analysis.
Storage	Store it under sterile conditions at -20°C to -80°C upon receiving. Recommend to aliquot the protein into smaller quantities for optimal storage. Avoid repeated freeze-

 Tel: 1-631-559-9269 1-516-512-3133

 Email: info@creative-biomart.com  Fax: 1-631-938-8127

 45-1 Ramsey Road, Shirley, NY 11967, USA

thaw cycles.

Reconstitution

It is recommended that sterile water be added to the vial to prepare a stock solution of 0.2 ug/ul. Centrifuge the vial at 4°C before opening to recover the entire contents.

GENE INFORMATION

Gene Name [NRP1 neuropilin 1 \[Homo sapiens \]](#)

Official Symbol [NRP1](#)

Synonyms NRP1; neuropilin 1; neuropilin-1; CD304; NRP; VEGF165R; transmembrane receptor; vascular endothelial cell growth factor 165 receptor; NP1; BDCA4; DKFZp781F1414; DKFZp686A03134;

Gene ID [8829](#)

mRNA Refseq [NM_001024628](#)

Protein Refseq [NP_001019799](#)

MIM [602069](#)

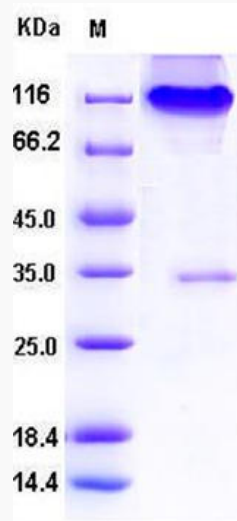
UniProt ID [O14786](#)

 Tel: 1-631-559-9269 1-516-512-3133

 Email: info@creative-biomart.com  Fax: 1-631-938-8127

 45-1 Ramsey Road, Shirley, NY 11967, USA

SDS-PAGE



 Tel: 1-631-559-9269 1-516-512-3133

 Email: info@creative-biomart.com  Fax: 1-631-938-8127

 45-1 Ramsey Road, Shirley, NY 11967, USA