

## Active Recombinant Human NRP1 protein, His-tagged

**Cat. No.** NRP1-644H    **Lot. No.** (See product label)

### SPECIFICATION

<b>Product Overview</b>	Active Recombinant Human NRP1 protein(NP_001019799.1)(Phe22-Lys644) is expressed from HEK293 with His tag at the C-Terminus.
<b>Species</b>	Human
<b>Source</b>	HEK293
<b>ProteinLength</b>	22-644 aa
<b>Form</b>	Lyophilized from 0.22µm filtered solution in PBS (pH 7.4).
<b>Bio-activity</b>	Immobilized Human VEGF165, No Tag at 5µg/ml (100µl/well) on the plate. Dose response curve for Human Neuropilin-1, His Tag with the EC50 of 0.57µg/ml determined by ELISA.
<b>Molecular Mass</b>	The protein has a predicted MW of 70.97 kDa. Due to glycosylation, the protein migrates to 90-110 kDa based on Bis-Tris PAGE result.
<b>Endotoxin</b>	Less than 1 EU per µg by the LAL method.
<b>Purity</b>	> 95% as determined by Bis-Tris PAGE > 90% as determined by HPLC
<b>Storage</b>	-20 to -80°C for 12 months as supplied from date of receipt. -80°C for 3 months after reconstitution. Recommend to aliquot the protein into smaller quantities for optimal storage. Please minimize freeze-thaw cycles.

 Tel: 1-631-559-9269    1-516-512-3133

 Email: [info@creative-biomart.com](mailto:info@creative-biomart.com)     Fax: 1-631-938-8127

 45-1 Ramsey Road, Shirley, NY 11967, USA

**Reconstitution** Dissolve the lyophilized protein in distilled water.

## GENE INFORMATION

**Gene Name** [NRP1 neuropilin 1 \[ Homo sapiens \]](#)

**Official Symbol** [NRP1](#)

**Synonyms** NRP1; neuropilin 1; neuropilin-1; CD304; NRP; VEGF165R; transmembrane receptor; vascular endothelial cell growth factor 165 receptor; NP1; BDCA4; DKFZp781F1414; DKFZp686A03134;

**Gene ID** [8829](#)

**mRNA Refseq** [NM\\_001024628](#)

**Protein Refseq** [NP\\_001019799](#)

**MIM** [602069](#)

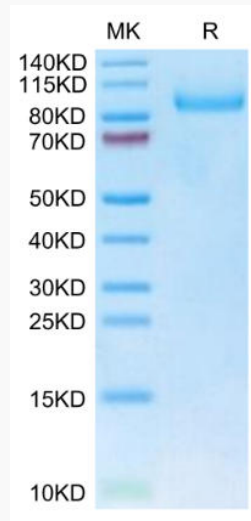
**UniProt ID** [O14786](#)

 Tel: 1-631-559-9269 1-516-512-3133

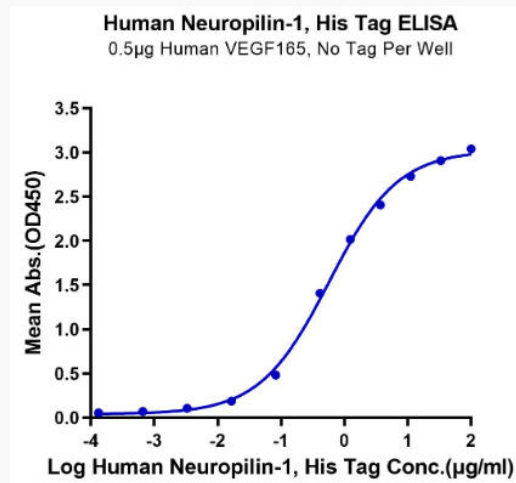
 Email: [info@creative-biomart.com](mailto:info@creative-biomart.com)  Fax: 1-631-938-8127

 45-1 Ramsey Road, Shirley, NY 11967, USA

**Bis-Tris PAGE**



**ELISA Data**



 Tel: 1-631-559-9269 1-516-512-3133

 Email: [info@creative-biomart.com](mailto:info@creative-biomart.com)  Fax: 1-631-938-8127

 45-1 Ramsey Road, Shirley, NY 11967, USA