

Recombinant Active Human NRTN Protein, His-tagged(C-ter)

Cat. No. NRTN-259H Lot. No. (See product label)

SPECIFICATION

Product Overview	Recombinant Active Human NRTN Protein with His tag (C-ter) was expressed in E. coli.
Species	Human
Source	E.coli
Description	Neurturin is a member of the TGF-beta subfamily, TRN. This gene signals through RET and a GPI-linked coreceptor, and promotes survival of neuronal populations. A neurturin mutation has been described in a family with Hirschsprung Disease. [provided by RefSeq, Jul 2008]
Form	Powder
Bio-activity	Determined by its ability to induce proliferation in SH-SY5Y cells. The ED50 for this effect is < 50 ng/mL.
AA Sequence	MARLGARPCGLRELEVRVSELGLGYASDETVLFRYCAGACEAAARVYDLGLRRLRQ RRRLRRRERVRAQPCCRPTAYEDEVSFDAHSRYHTVHELARSARECACV
Endotoxin	Endotoxin level is less than 0.1 EU/μg of the protein, as determined by the LAL test.
Purity	> 98% (by SDS-PAGE)
Applications	SDS-PAGE

 Tel: 1-631-559-9269 1-516-512-3133

 Email: info@creative-biomart.com  Fax: 1-631-938-8127

 45-1 Ramsey Road, Shirley, NY 11967, USA

Notes	For laboratory research only, not for drug, diagnostic or other use.
Storage	Lyophilized protein should be stored at -20°C. After reconstitution, aliquot and store at -20°C or -80°C for up to one month. Storage in frost free freezers is not recommended. Avoid repeated freeze/thaw cycles. Suggest spin the vial prior to opening.
Storage Buffer	PBS (pH 7.4)
Reconstitution	It is recommended to reconstitute the lyophilized protein in sterile water to a concentration not less than 100 µg/mL and incubate the stock solution for at least 20 min at room temperature to make sure the protein is dissolved completely.

GENE INFORMATION

Gene Name	NRTN neurturin [Homo sapiens]
Official Symbol	NRTN
Synonyms	NRTN; neurturin; NTN;
Gene ID	4902
mRNA Refseq	NM_004558
Protein Refseq	NP_004549
MIM	602018
UniProt ID	Q99748

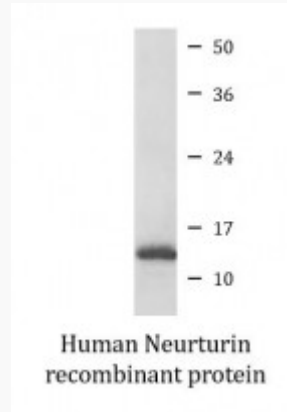
 Tel: 1-631-559-9269 1-516-512-3133

 Email: info@creative-biomart.com  Fax: 1-631-938-8127

 45-1 Ramsey Road, Shirley, NY 11967, USA



SDS-PAGE



Tel: 1-631-559-9269 1-516-512-3133

Email: info@creative-biomart.com Fax: 1-631-938-8127

45-1 Ramsey Road, Shirley, NY 11967, USA