

## Active Recombinant Human Neurexin I, Fc-tagged

Cat. No. NRXN1-054H Lot. No. (See product label)

### SPECIFICATION

|                            |   |
|----------------------------|---|
| <b>Product Overview</b>    | Recombinant Human NRXN1 protein was expressed in Murine myeloma cell line with the Fc part of human IgG1 Pro100-Lys330 (C-terminus) and Ala51-Ser363 (N-terminus).  |
| <b>Species</b>             | Human   |
| <b>Source</b>              | Mammalian Cells   |
| <b>Protein Length</b>      | 51-363 a.a.   |
| <b>Description</b>         | The alpha and beta forms of Neurexins 1-3 are transmembrane neuronal glycoproteins which are transcribed from each of three NRXN genes that utilize alternate promoters. Like other Neurexins, the extracellular domain (ECD) of NRXN1 contains six LNS domains interspersed with three EGF-like domains, while that of NRXN1 contains only the sixth LNS domain and no EGF-like domains. Mature human NRXN1 is a 70 kDa glycosylated protein with a 313 amino acid (aa) ECD and a 56 aa cytoplasmic domain that contains a motif for binding PDZ scaffolding proteins. |
| <b>Form</b>                | Lyophilized from a 0.2 µm filtered solution in PBS.   |
| <b>N-terminal Sequence</b> | Ala51   |
| <b>Molecular Weight</b>    | 59.9 kDa  |
| <b>Activity</b>            | Measured by its binding ability in a functional ELISA. Biotinylated rrNLGN-   |

 Tel: 1-631-559-9269 1-516-512-3133

 Email: [info@creative-biomart.com](mailto:info@creative-biomart.com)  Fax: 1-631-938-8127

 45-1 Ramsey Road, Shirley, NY 11967, USA

|                        |   |
|------------------------|---|
|                        | 1v2immobilized on a streptavidincoated plate at 1 µg/mL (100 µL/well) can bindrhNRXN1/Fc Chimera with an apparent KD < 4 nM.  |
| <b>Endotoxin Level</b> | <1.0 EUper 1 µg of the protein by the LAL method.   |
| <b>SDS-PAGE</b>        | 85-95kDa, reducing conditions   |
| <b>Purity</b>          | >90%,by SDS-PAGE under reducing conditions and visualized by silver stain.  |
| <b>Reconstitution</b>  | Reconstituteat 500 µg/mL in sterile PBS   |
| <b>Storage</b>         | Use a manualdefrost freezer and avoid repeated freezethaw cycles. 12 months from date of receipt,-20 to -70°C as supplied. 1 month, 2 to 8 °C under sterile conditions after reconstitution.3 months, -20 to -70°C under sterile conditions after reconstitution. |

## GENE INFORMATION

|                        |   |
|------------------------|---|
| <b>Gene Name</b>       | NRXN1 neurexin 1 [ Homosapiens ]  |
| <b>Official Symbol</b> | NRXN1   |
| <b>Synonyms</b>        | NRXN1; neurexin 1;PTHSL2; SCZD17; Hs.22998; neurexin-1-beta; neurexin I; neurexin I-beta;neurexin I-alpha; neurexin-1-alpha |
| <b>Gene ID</b>         | 9378  |
| <b>mRNA Refseq</b>     | NM_138735   |
| <b>Protein Refseq</b>  | NP_620072   |
| <b>MIM</b>             | 600565  |

 Tel: 1-631-559-9269 1-516-512-3133

 Email: [info@creative-biomart.com](mailto:info@creative-biomart.com)  Fax: 1-631-938-8127

 45-1 Ramsey Road, Shirley, NY 11967, USA

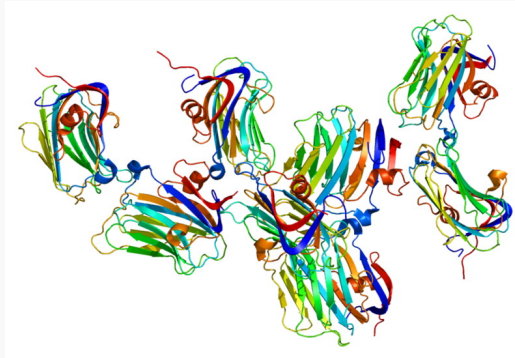
**UniProt ID** P58400

**Chromosome Location** 2p16.3

**Pathway** Cell adhesion molecules (CAMs)

**Function** acetylcholinereceptor binding; calcium channel regulator activity; calcium-dependent protein binding; cell adhesion molecule binding; neuroligin family protein binding; protein binding; receptor binding; receptor activity; metal ion binding

**PDB rendering based on 1c4r.**



 Tel: 1-631-559-9269 1-516-512-3133

 Email: [info@creative-biomart.com](mailto:info@creative-biomart.com)  Fax: 1-631-938-8127

 45-1 Ramsey Road, Shirley, NY 11967, USA