

# Recombinant Full Length Human NRXN1 Protein, C-Flag-tagged

**Cat. No.** NRXN1-1316HFL    **Lot. No.** (See product label)

## SPECIFICATION

<b>Product Overview</b>	Recombinant Full Length Human NRXN1 Protein, fused to Flag-tag at C-terminus, was expressed in Mammalian cells.
<b>Species</b>	Human
<b>Source</b>	Mammalian Cells
<b>Description</b>	This gene encodes a single-pass type I membrane protein that belongs to the neurexin family. Neurexins are cell-surface receptors that bind neuroligins to form Ca(2+)-dependent neurexin/neuroligin complexes at synapses in the central nervous system. This complex is required for efficient neurotransmission and is involved in the formation of synaptic contacts. Three members of this gene family have been studied in detail and are estimated to generate over 3,000 variants through the use of two alternative promoters (alpha and beta) and extensive alternative splicing in each family member. Recently, a third promoter (gamma) was identified for this gene in the 3' region. Mutations in this gene are associated with Pitt-Hopkins-like syndrome-2 and may contribute to susceptibility to schizophrenia.
<b>Form</b>	25 mM Tris HCl, pH 7.3, 100 mM glycine, 10% glycerol.
<b>Molecular Mass</b>	158.8 kDa
<b>AA Sequence</b>	MGTALLQRGGCFLLCLSLLLLGCWAE LGSGLEFPGAEGQWTRFPKWNACCESEMS FQLKTRSARGLVLYF DDEGFCDLFLELILTRGGRLQLSFSIFCAEPATLLADTPVNDGA

 Tel: 1-631-559-9269    1-516-512-3133

 Email: [info@creative-biomart.com](mailto:info@creative-biomart.com)     Fax: 1-631-938-8127

 45-1 Ramsey Road, Shirley, NY 11967, USA

WHSVRIRRQFRNTTLFIDQVEAKWVEV KSKRRDMTVFSGLFVGGLPPELRAAALKL  
 TLASVREREPFKGWIRDVRVNSSQVLPVDSGEVKLDDEPPN SGGGSPCEAGEEGE  
 GGVCLNGGVCSVDDQAVCDCSRTGFRGKDCSQEDNNVEGLAHLMMGDQGKSK  
 GKE EYIATFKGSEYFCYDLSQNPQQSSSDEITLSFKTLQRNGLMLHTGKSADYVNLA  
 LKNGAVSLVINLGSGA FEALVEPVNGKFNDNAWHDKVTRNLRQHSGIGHAMVTIS  
 VDGILTTTGYTQEDYTMLGSDDFFVYGGSP STADLPGSPVSNFMGCLKEVVYKN  
 NDVRLELSRLAKQGDPKMKIHGVVAFKENVATLDPITFETPESF ISLPKWNAKKTG  
 SISDFRRTTEPNGLILFSHGKPRHQKDAKHPQMIKVDFFAIEMLDGHLYLDDMGSGT  
 IKIKALLKKVNDGEWYHVDFQRDGRSGTISVNTLRTPYTAPGESEILDDELYLGG  
 PENKAGLVFPTE VWTALLNYGYVGCIRDLFIDGQSKDIRQMAEVQSTAGVKPSCSK  
 ETAKPCLSNPCKNNGMCRDGWNRYVC DCSGTGYLGRSCEREATVLSYDGSMFM  
 KIQLPVMHTEAEDVSLRFRSQRAYGILMATTSRDSADTLRLE LDAGRVLKTVNLDC  
 IRINCNSSKGPETL FAGYNLNDNEWHTVRVVRRGKSLKLTVDQAMTGQ MAGDH  
 T RLEFHNIETGIITERRYLSSVPSNFIGHLQSLTFNGMAYIDLCKNGDIDYCELNARFG  
 FRNIIADPVTFK TKSSYVALATLQAYTSMHLFFQFKTTSLDGLILYNSGDGNDFIVEL  
 VKGYLHYVFDLGNANLIKSSN KPLNDNQWHNVMISRDTSNLHTVKIDTKITTQITA  
 GARNLDLKSPLYIGGVAKETYKSLPKLVHAKGEGFQ GCLASVDLNGRLPDLISDALFC  
 NGQIERGCEGPSTTCQEDSCSNQGVCLQQWDGFSCDCSMTSFSGPLCN DPGTTY  
 IFSKGGGQITYKWPPNDRPSTRADRLAIGFSTVQKEAVLVRVDSSSGLGDYLELHIH  
 QGKIGVK FNVGTDDIAIEESNAIINDGKYHVVRFTSRGGNATLQVDSWPVIERYPAG  
 RQLTIFNSQATIIIGGKEQG QPFQGLSGLYNGLVNMAAENDANIAIVGNVRLVG  
 EVPSSMTTESTATAMQSEMSTSIMETTTTLAT STARRGKPPTKEPISQTTDDILVASA  
 ECPSDDEDIDPCEPSSGGLANPTRAGGREPYPGSAEVIRESSST TGMVVGIVAAAA  
 LCILILLYAMYKYRNRDEGSYHVDESRNYISNSAQSNGAVVKEKQPSSAKSSNKNKK  
 N  
 KDKEYVTRTRPLEQKLISEEDLAANDILDYKDDDDKV

<b>Purity</b>	> 80% as determined by SDS-PAGE and Coomassie blue staining.
<b>Stability</b>	Stable for 12 months from the date of receipt of the product under proper storage and

 Tel: 1-631-559-9269 1-516-512-3133

 Email: [info@creative-biomart.com](mailto:info@creative-biomart.com)  Fax: 1-631-938-8127

 45-1 Ramsey Road, Shirley, NY 11967, USA

	handling conditions. Avoid repeated freeze-thaw cycles.
<b>Storage</b>	Store at -80 centigrade.
<b>Concentration</b>	>50 ug/mL as determined by microplate BCA method.
<b>Preparation</b>	Recombinant protein was captured through anti-DDK affinity column followed by conventional chromatography steps.
<b>Protein Families</b>	Druggable Genome, Transmembrane
<b>Protein Pathways</b>	Cell adhesion molecules (CAMs)
<b>Full Length</b>	Full L.

## GENE INFORMATION

<b>Gene Name</b>	NRXN1 neurexin 1 [ Homo sapiens (human) ]
<b>Official Symbol</b>	NRXN1
<b>Synonyms</b>	PTHSL2; SCZD17; Hs.22998
<b>Gene ID</b>	9378
<b>mRNA Refseq</b>	NM_004801.6
<b>Protein Refseq</b>	NP_004792.1
<b>MIM</b>	600565

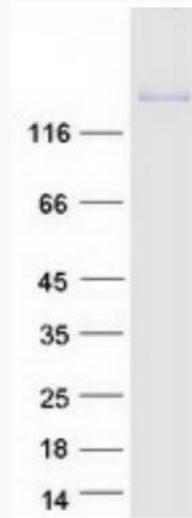
 Tel: 1-631-559-9269 1-516-512-3133

 Email: [info@creative-biomart.com](mailto:info@creative-biomart.com)  Fax: 1-631-938-8127


 45-1 Ramsey Road, Shirley, NY 11967, USA

UniProt ID


Q9ULB1



Coomassie blue staining of purified NRXN1 protein.

 Tel: 1-631-559-9269 1-516-512-3133

 Email: [info@creative-biomart.com](mailto:info@creative-biomart.com)  Fax: 1-631-938-8127

 45-1 Ramsey Road, Shirley, NY 11967, USA