

Recombinant Full Length Human NSF Protein, C-Flag-tagged

Cat. No. NSF-1227HFL Lot. No. (See product label)

SPECIFICATION

Product Overview	Recombinant Full Length Human NSF Protein, fused to Flag-tag at C-terminus, was expressed in Mammalian cells.
Species	Human
Source	Mammalian Cells
Description	Enables PDZ domain binding activity and ionotropic glutamate receptor binding activity. Involved in intracellular protein transport; positive regulation of protein catabolic process; and positive regulation of receptor recycling. Located in Golgi apparatus; cytosol; and plasma membrane. Implicated in developmental and epileptic encephalopathy.
Form	25 mM Tris HCl, pH 7.3, 100 mM glycine, 10% glycerol.
Molecular Mass	82.4 kDa
AA Sequence	MAGRSMQAARCPTDELSLTNCAVVNEKDFQSGQHVVIVRTSPNHRYTFTLKTHTPSV PGSIAFSLPQRKWA GLSIGQEIEVSLYTFDKAKQCIGTMTIEIDFLQKKSIDSNPYDTD KMAAEFIQQFNNAFVSVGQQLVFSF NEKLFGLLVKDIEAMDPSILKGEPATGKRQKI EVGLVVGNSQVAFEKAENSSLNLIGKAKTKENRQSIIN PDWNFEKMGIGGLDKEFSD IFRRAFASRVFPPEIVEQMGCKHVKGILLYGPPGCGKTLRLARQIGKMLNAR EPKVVN GPEILNKYVGESEANIRKLFADAEQQRRLLGANSGLHIIIFDEIDAICKQRGSMAGSTG VHDTV VNQLLSKIDGVEQLNINLVIGMTNRPDLIDEALLRPGRLEVKMEIGLPDEKGR LQILHIHTARMRGHQLL SADVDIKELAVETKNFSGAELEGLVRAAQSTAMNRHIKAST

 Tel: 1-631-559-9269 1-516-512-3133

 Email: info@creative-biomart.com  Fax: 1-631-938-8127

 45-1 Ramsey Road, Shirley, NY 11967, USA

KVEVDMEKAESLQVTRGDFLASLENDIKP AFGTNQEDYASYIMNGIIKWGDPVTRVL
 DDGELLVQQTKNSDRTPLVSVLLEGPPHSGKTALAAKIAEES NFPFIKICSPDKMIGF
 SETAKCQAMKKIFDDAYKSQLSCVVVDDIERLLDYVPIGPRFSNLVLQALLVLL KKAP
 PQGRKLLIIGTTSRKDVLQEMEMLNAFSTTIHVPNIATGEQLLEALELLGNFKDKERTT
 IAQQVKG
 KKVWIGIKLLMLIEMSLQMDPEYRVRKFLALLREEGASPLDFDTRTRPLEQKLISEE
 DLAANDILDYKDDDDKV

Purity > 80% as determined by SDS-PAGE and Coomassie blue staining.

Stability Stable for 12 months from the date of receipt of the product under proper storage and handling conditions. Avoid repeated freeze-thaw cycles.

Storage Store at -80 centigrade.

Concentration >50 ug/mL as determined by microplate BCA method.

Preparation Recombinant protein was captured through anti-DDK affinity column followed by conventional chromatography steps.

Protein Families Protease

Full Length Full L.

GENE INFORMATION

Gene Name NSF N-ethylmaleimide sensitive factor, vesicle fusing ATPase [Homo sapiens (human)]

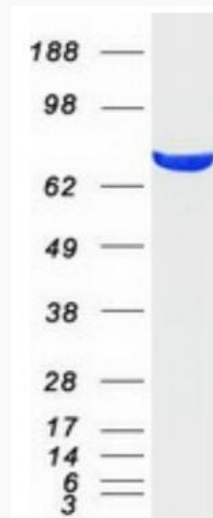
Official Symbol NSF

 Tel: 1-631-559-9269 1-516-512-3133

 Email: info@creative-biomart.com  Fax: 1-631-938-8127

 45-1 Ramsey Road, Shirley, NY 11967, USA

Synonyms	SKD2; DEE96; SEC18
Gene ID	4905
mRNA Refseq	NM_006178.4
Protein Refseq	NP_006169.2
MIM	601633
UniProt ID	P46459



Coomassie blue staining of purified NSF protein.

 Tel: 1-631-559-9269 1-516-512-3133

 Email: info@creative-biomart.com  Fax: 1-631-938-8127

 45-1 Ramsey Road, Shirley, NY 11967, USA