

Recombinant Human NSF protein, His & T7-tagged

Cat. No. NSF-7980H Lot. No. (See product label)

SPECIFICATION

Product Overview	Recombinant Human NSF aa. (Asp590~Asp744 (Accession # P46459)) fused with N-terminal His & T7 tag was produced in E. coli cells.
Species	Human
Source	E.coli
ProteinLength	Asp590~Asp744
Form	Freeze-dried powder
Molecular Mass	Predicted Molecular Mass: 21.3kDa
Endotoxin	<1.0EU per 1ug (determined by the LAL method)
Purity	>95%
Characteristic	The isoelectric point is 6.8.
Applications	SDS-PAGE; WB; ELISA; IP
Stability	The thermal stability is described by the loss rate of the target protein. The loss rate was determined by accelerated thermal degradation test, that is, incubate the protein at 37°C for 48h, and no obvious degradation and precipitation were observed. (Referring from China Biological Products Standard, which was calculated by the

 Tel: 1-631-559-9269 1-516-512-3133

 Email: info@creative-biomart.com  Fax: 1-631-938-8127

 45-1 Ramsey Road, Shirley, NY 11967, USA

Arrhenius equation.) The loss of this protein is less than 5% within the expiration date under appropriate storage condition.

Storage

Avoid repeated freeze/thaw cycles. Store at 2-8°C for one month. Aliquot and store at -80°C for 12 months.

Storage Buffer

Supplied as lyophilized form in PBS, pH7.4, containing 5% trehalose, 0.01% sarcosyl.

Reconstitution

Reconstitute in sterile PBS, pH7.2-pH7.4.

GENE INFORMATION

Gene Name

NSF N-ethylmaleimide sensitive factor, vesicle fusing ATPase [Homo sapiens (human)]

Official Symbol

NSF

Synonyms

SKD2; SEC18; N-ethylmaleimide-sensitive factor-like protein; N-ethylmaleimide-sensitive fusion protein; NEM-sensitive fusion protein; vesicular-fusion protein NSF; vesicle-fusing ATPase

Gene ID

4905

mRNA Refseq

NM_006178.3

Protein Refseq

NP_006169.2

UniProt ID

P46459

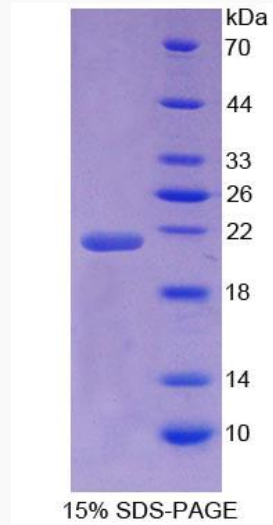
 Tel: 1-631-559-9269 1-516-512-3133

 Email: info@creative-biomart.com  Fax: 1-631-938-8127

 45-1 Ramsey Road, Shirley, NY 11967, USA



SDS-PAGE



Tel: 1-631-559-9269 1-516-512-3133

Email: info@creative-biomart.com Fax: 1-631-938-8127

45-1 Ramsey Road, Shirley, NY 11967, USA