

# Recombinant Human NSG1 Protein, Myc/DDK-tagged, C13 and N15-labeled

**Cat. No.** NSG1-1612H    **Lot. No.** (See product label)

## SPECIFICATION

<b>Product Overview</b>	D4S234E MS Standard C13 and N15-labeled recombinant protein (NP_055207) with a C-terminal MYC/DDK tag, was expressed in HEK293 cells.
<b>Species</b>	Human
<b>Source</b>	HEK293
<b>Description</b>	NSG1 (Neuronal Vesicle Trafficking Associated 1) is a Protein Coding gene. Gene Ontology (GO) annotations related to this gene include clathrin light chain binding. An important paralog of this gene is NSG2.
<b>Molecular Mass</b>	20.7 kDa
<b>AA Sequence</b>	MVKLGNNFAEKGTKQPLLEDGFDTIPLMTPLDVNQLQFPPDPKVVVKTKEYEPDRK KKGARPPQIAEFTVSITEGVTERFKVSVLVLFALAF LTCVVFLVVYKVYKYDRACPDG FVLKNTQCIPEGLESYYAEQDSSAREKFYTVINHYNLAKQSITRSVSPWMSVLSEEKL SEQETEAAEKSATRTRPLEQKLISEEDLAANDILDYKDDDDKV
<b>Purity</b>	> 80% as determined by SDS-PAGE and Coomassie blue staining
<b>Stability</b>	Stable for 3 months from receipt of products under proper storage and handling conditions.
<b>Storage</b>	Store at -80 centigrade. Avoid repeated freeze-thaw cycles.

 Tel: 1-631-559-9269    1-516-512-3133

 Email: [info@creative-biomart.com](mailto:info@creative-biomart.com)     Fax: 1-631-938-8127

 45-1 Ramsey Road, Shirley, NY 11967, USA

**Concentration** 50 µg/mL as determined by BCA

**Storage Buffer** 100 mM glycine, 25 mM Tris-HCl, pH 7.3.

## GENE INFORMATION

**Gene Name** [NSG1 neuronal vesicle trafficking associated 1 \[ Homo sapiens \(human\) \]](#)

**Official Symbol** [NSG1](#)

**Synonyms**

NSG1; neuronal vesicle trafficking associated 1; P21; D4S234; NEEP21; D4S234E; neuronal vesicle trafficking-associated protein 1; brain neuron cytoplasmic protein 1; carboxyterminally EE-tagged neuron-enriched endosomal 21 kDa protein; neuron specific gene family member 1; neuron-enriched endosomal protein of 21 kDa; neuron-specific protein family member 1

**Gene ID** [27065](#)

**mRNA Refseq** [NM\\_014392](#)

**Protein Refseq** [NP\\_055207](#)

**MIM** [607645](#)

**UniProt ID** [P42857](#)

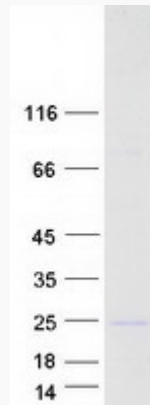
 Tel: 1-631-559-9269 1-516-512-3133

 Email: [info@creative-biomart.com](mailto:info@creative-biomart.com)  Fax: 1-631-938-8127

 45-1 Ramsey Road, Shirley, NY 11967, USA



**SDS-PAGE**



Tel: 1-631-559-9269 1-516-512-3133

Email: [info@creative-biomart.com](mailto:info@creative-biomart.com) Fax: 1-631-938-8127

45-1 Ramsey Road, Shirley, NY 11967, USA